

Photogrammetry Report

grimsel G1 ultra

Generated: 2026-06-01 22:46 UTC

Images: 228

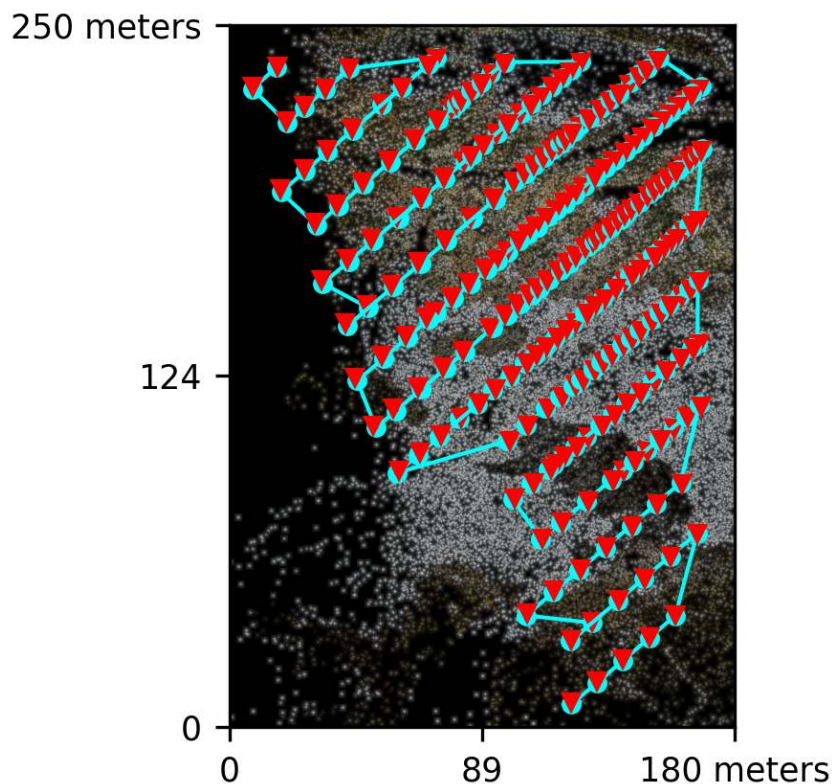
Processing: 2:56:02

Dataset Summary

Date	01/06/2026 at 20:14:03
Area Covered	0.036894 km ²
Processing Time	2.0h:35.0m:5.0s
Capture Start	31/05/2026 at 10:53:32
Capture End	31/05/2026 at 11:06:05

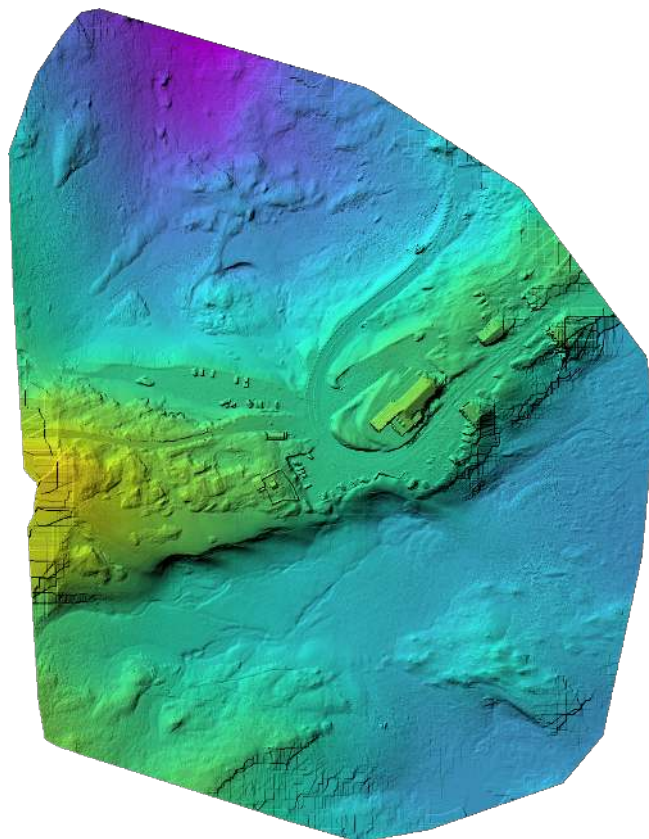
Processing Summary

Reconstructed Images	228 over 228 shots (100.0%)
Reconstructed Points (Sparse)	370123 over 379324 points (97.6%)
Reconstructed Points (Dense)	136,879,223 points
Average Ground Sampling Distance (GSD)	2.8 cm
Detected Features	16,000 features
Reconstructed Features	10,605 features
Geographic Reference	GPS
GPS errors	1.36 meters



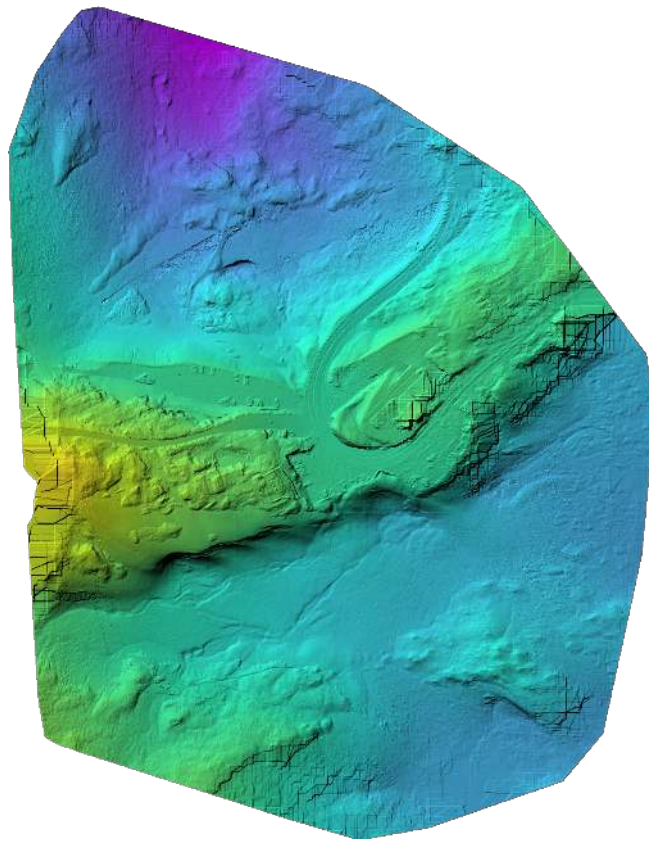


Orthophoto



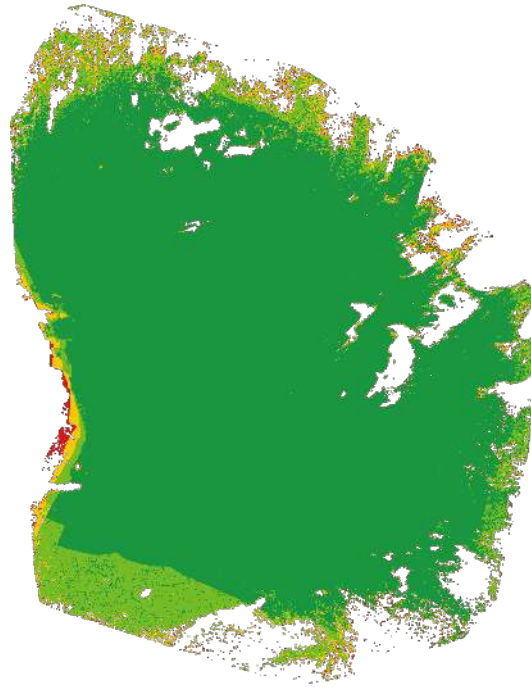
Digital Surface Model





Digital Terrain Model





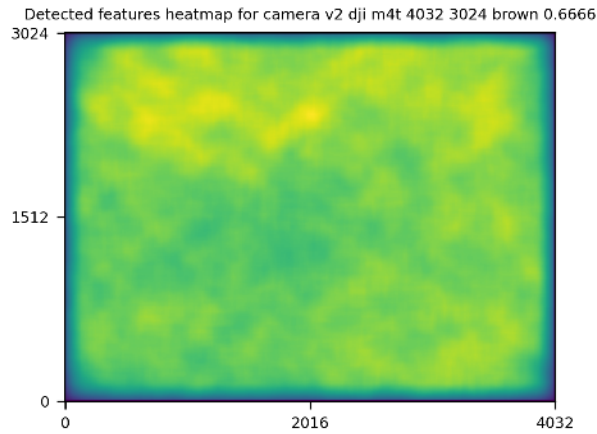
■ 2 ■ 3 ■ 4 ■ 5+

GPS/GCP/3D Errors Details

GPS	Mean	Standard Deviation	RMS Error
X Error (meters)	-0.001	0.610	0.610
Y Error (meters)	-0.000	0.476	0.476
Z Error (meters)	0.001	1.286	1.286
Total			1.365

3D	Mean	Standard Deviation	RMS Error
X Error (meters)	0.260	0.518	0.580
Y Error (meters)	0.176	0.522	0.551
Z Error (meters)	0.228	0.419	0.477
Total			0.438

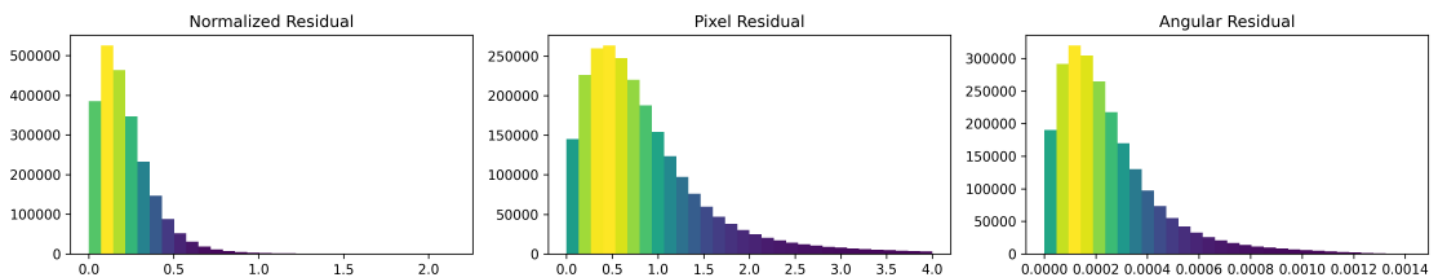
	Absolute	Relative
Horizontal Accuracy CE90 (meters)	1.078	0.786
Vertical Accuracy LE90 (meters)	2.045	0.471

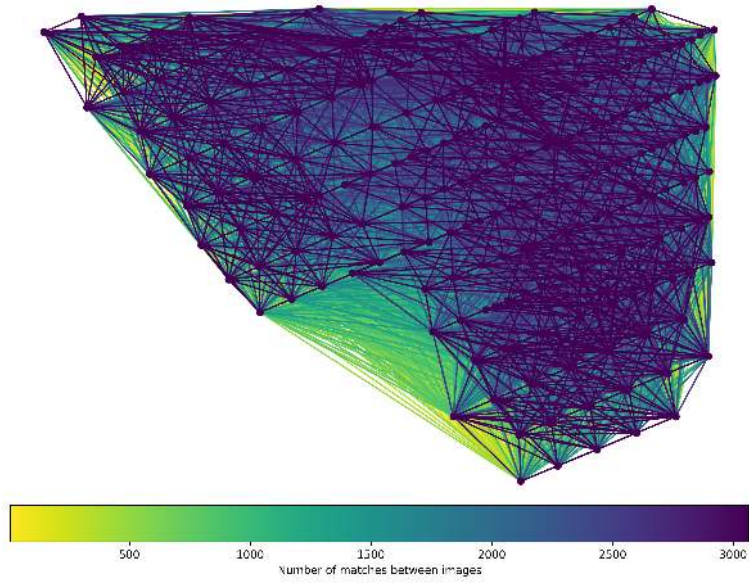


	Min.	Max.	Mean	Median
Detected	16000	16000	16000	16000
Reconstructed	3807	12609	10493	10605

Reconstruction Details

Average Reprojection Error (normalized / pixels / angular)	0.22 / 0.84 / 0.00025
Average Track Length	6.46 images
Average Track Length (> 2)	9.27 images



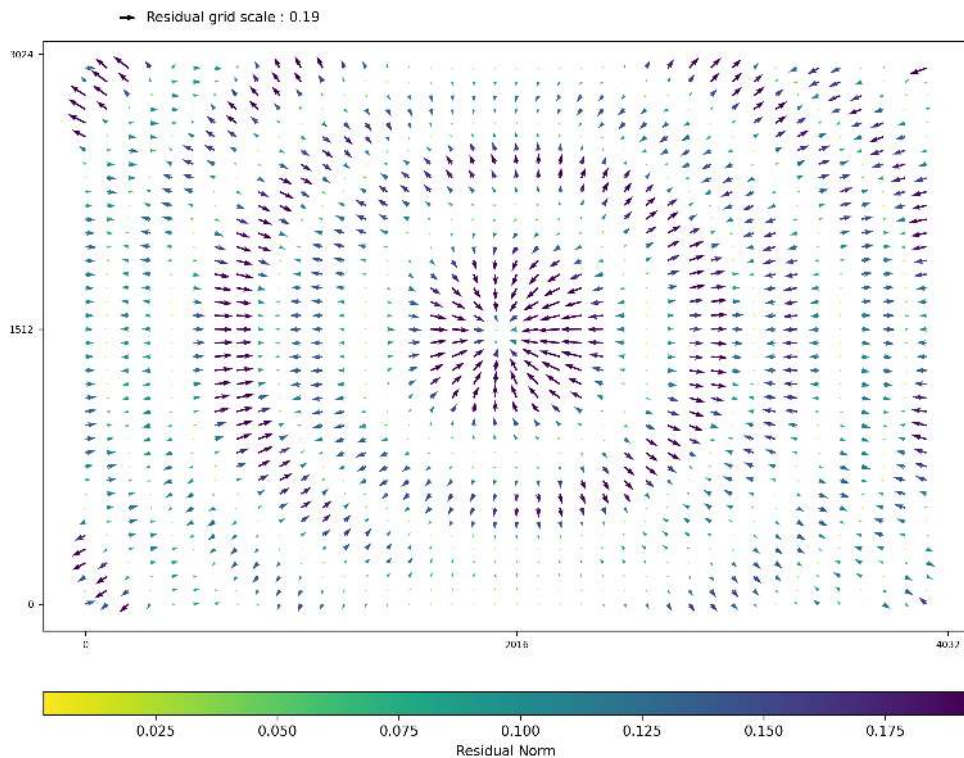


Length	2	3	4	5	6	7	8	9	10
Count	142754	63492	37065	23679	16569	12098	9805	7485	6132

Camera Models Details

v2 dji m4t 4032 3024 brown 0.6666

	k1	k2	k3	p1	p2	focal	aspect_ratio	cx	cy
Initial	0.0000	0.0000	0.0000	0.0000	0.0000	0.6667	1.0000	0.0000	0.0000
Optimized	0.0930	-0.1469	0.0988	0.0003	-0.0003	0.6972	1.0000	-0.0001	-0.0001



Photogrammetry Report

grimsel G2_1 ultra

Generated: 2026-06-01 20:15 UTC

Images: 280

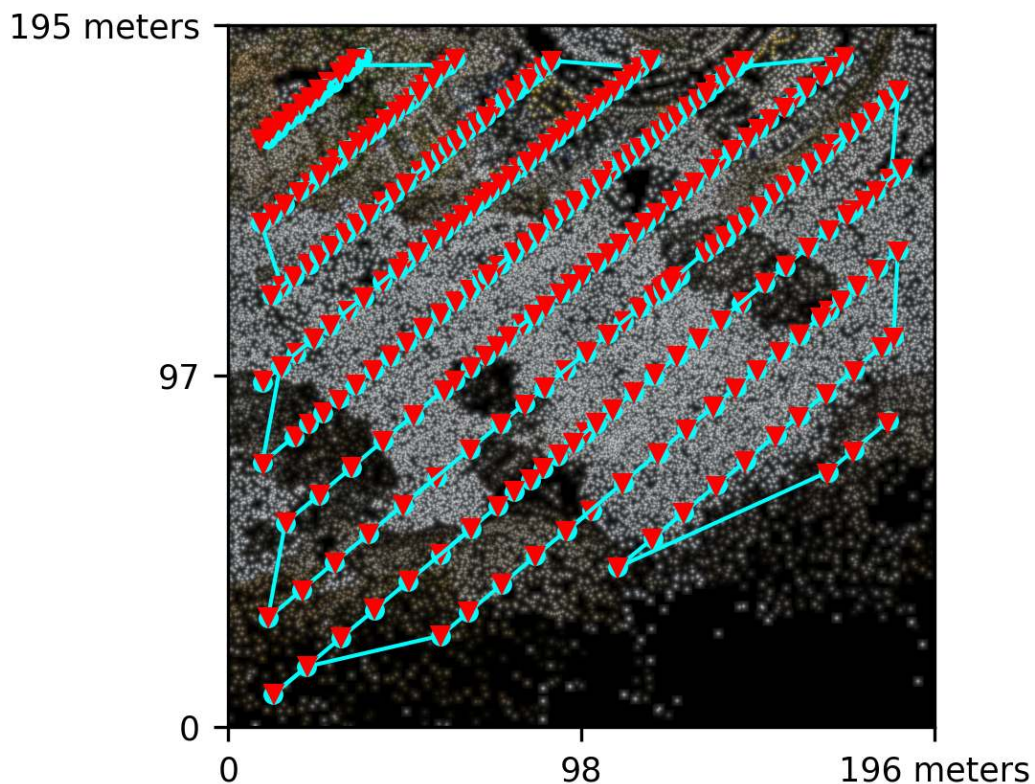
Processing: 3:38:52

Dataset Summary

Date	01/06/2026 at 17:03:27
Area Covered	0.031670 km ²
Processing Time	3.0h:7.0m:29.0s
Capture Start	31/05/2026 at 10:58:44
Capture End	31/05/2026 at 11:07:25

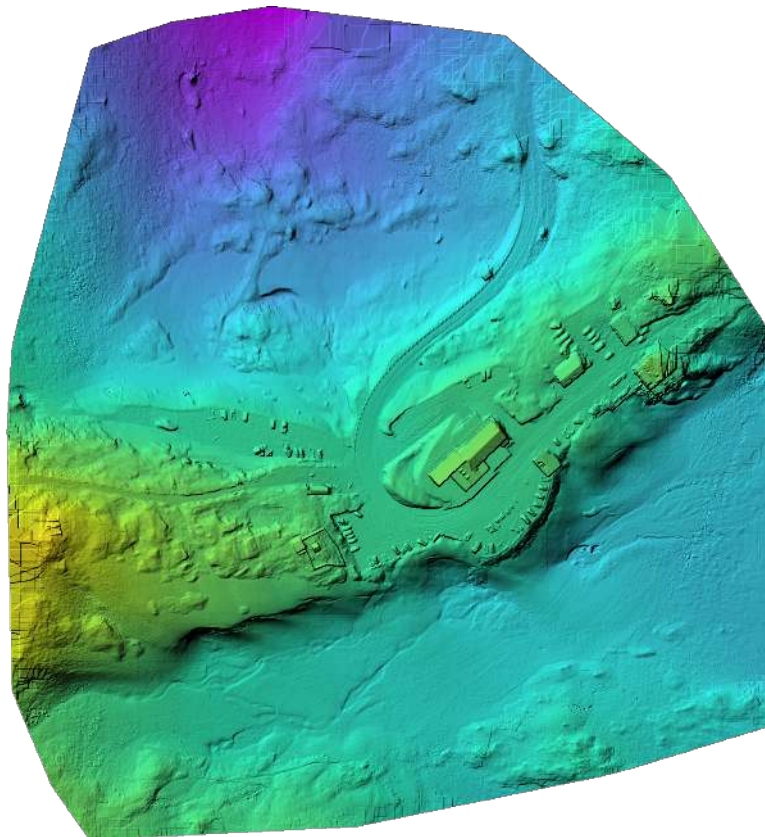
Processing Summary

Reconstructed Images	280 over 280 shots (100.0%)
Reconstructed Points (Sparse)	488429 over 497763 points (98.1%)
Reconstructed Points (Dense)	170,975,463 points
Average Ground Sampling Distance (GSD)	2.8 cm
Detected Features	16,000 features
Reconstructed Features	10,799 features
Geographic Reference	GPS
GPS errors	0.56 meters



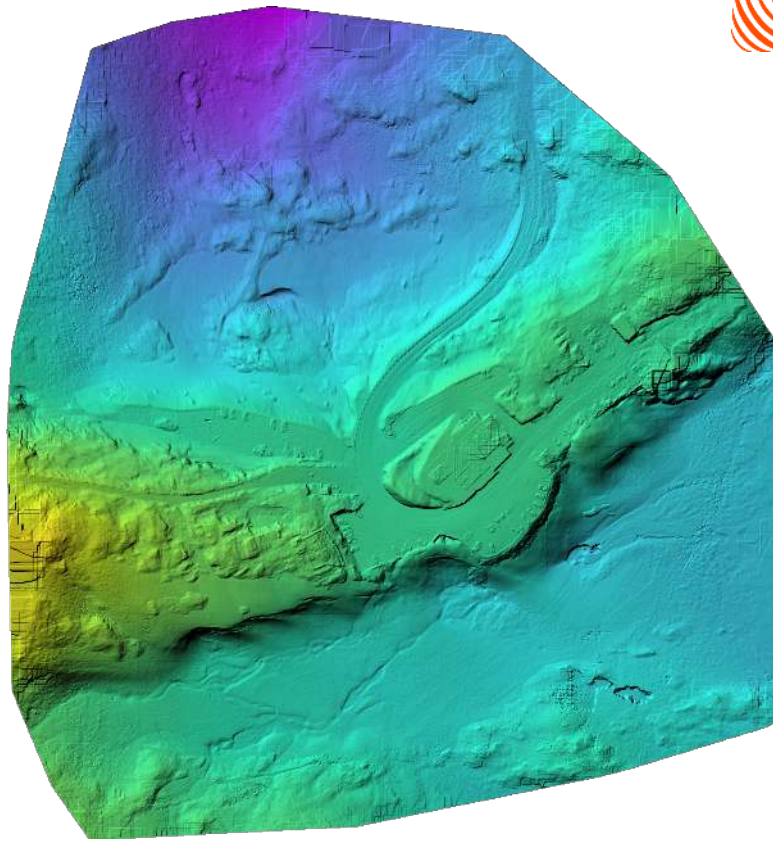


Orthophoto



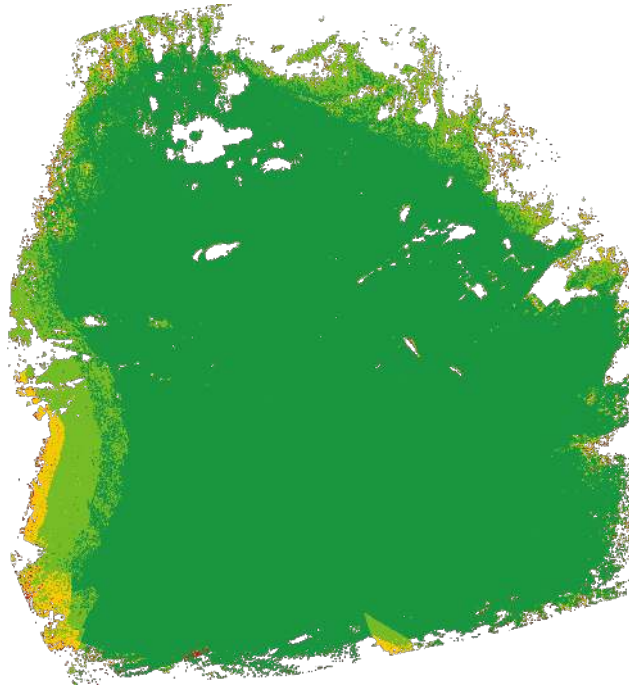
Digital Surface Model





Digital Terrain Model



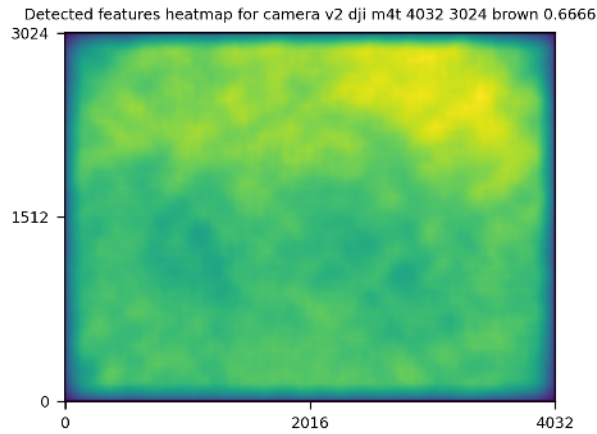


GPS/GCP/3D Errors Details

GPS	Mean	Standard Deviation	RMS Error
X Error (meters)	-0.001	0.381	0.381
Y Error (meters)	0.001	0.167	0.167
Z Error (meters)	-0.001	0.833	0.833
Total			0.559

3D	Mean	Standard Deviation	RMS Error
X Error (meters)	0.184	0.336	0.383
Y Error (meters)	0.131	0.313	0.339
Z Error (meters)	0.175	0.415	0.451
Total			0.323

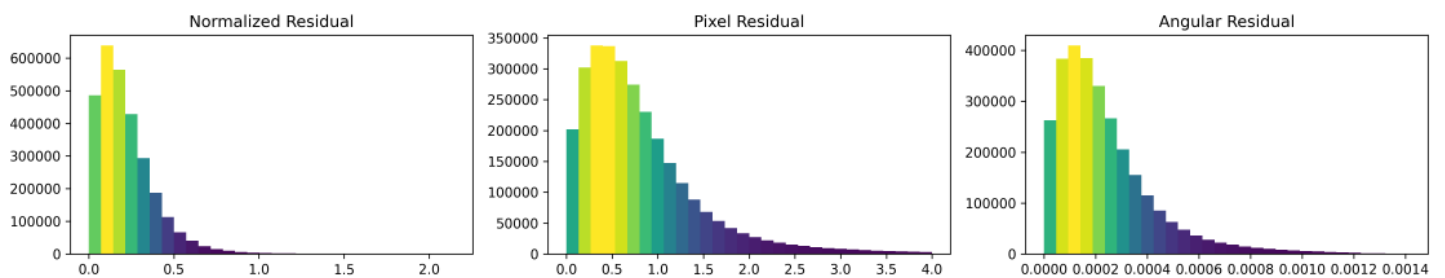
	Absolute	Relative
Horizontal Accuracy CE90 (meters)	0.420	0.571
Vertical Accuracy LE90 (meters)	0.776	0.347

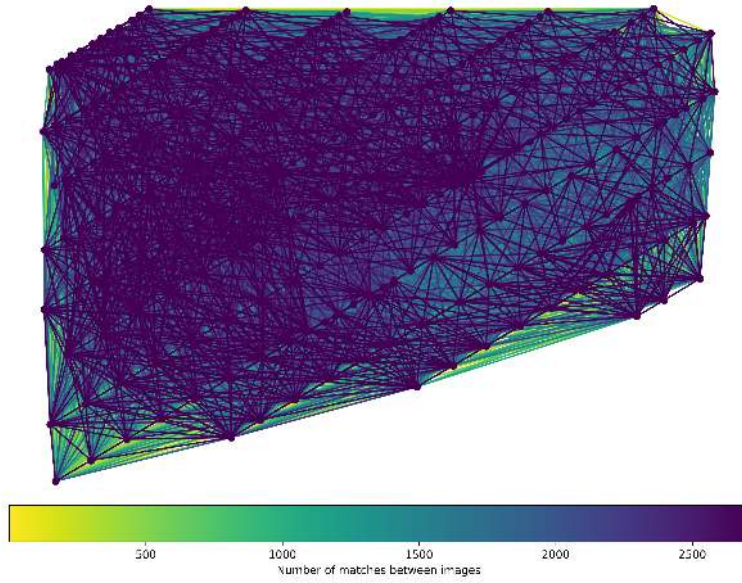


	Min.	Max.	Mean	Median
Detected	16000	16000	16000	16000
Reconstructed	5329	12599	10577	10799

Reconstruction Details

Average Reprojection Error (normalized / pixels / angular)	0.22 / 0.80 / 0.00024
Average Track Length	6.06 images
Average Track Length (> 2)	8.79 images



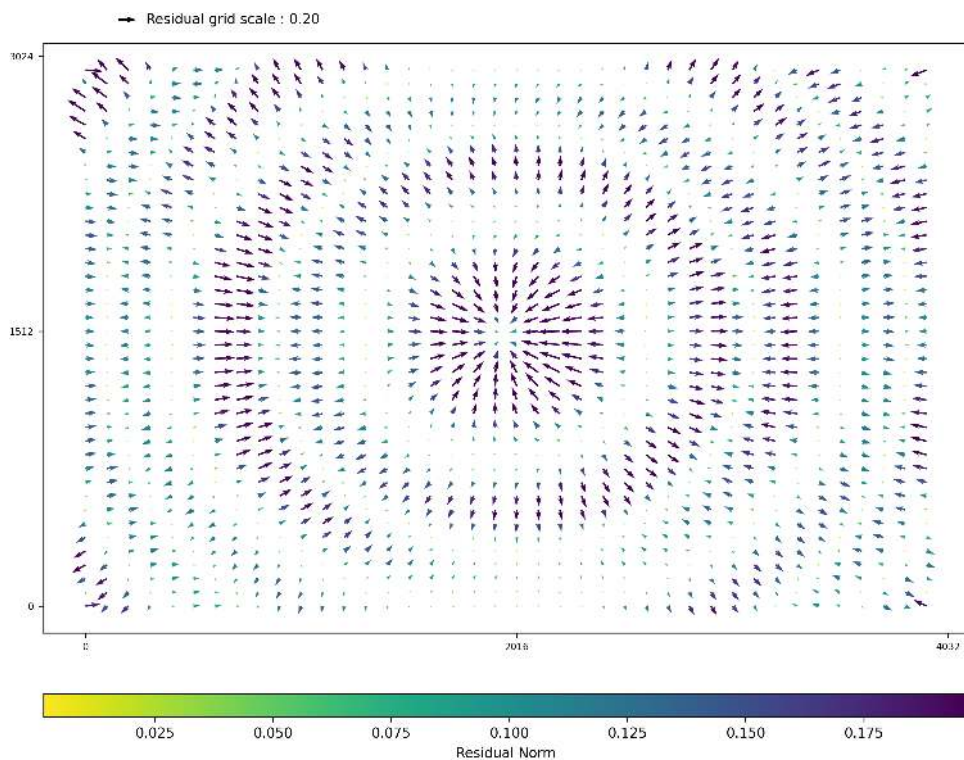


Length	2	3	4	5	6	7	8	9	10
Count	196008	91197	46922	30211	21013	15602	11228	9293	7235

Camera Models Details

v2 dji m4t 4032 3024 brown 0.6666

	k1	k2	k3	p1	p2	focal	aspect_ratio	cx	cy
Initial	0.0000	0.0000	0.0000	0.0000	0.0000	0.6667	1.0000	0.0000	0.0000
Optimized	0.0946	-0.1501	0.1017	0.0003	-0.0003	0.6969	1.0000	0.0000	-0.0002



Photogrammetry Report

grimsel G2_2 ultra

Generated: 2026-06-01 19:53 UTC

Images: 236

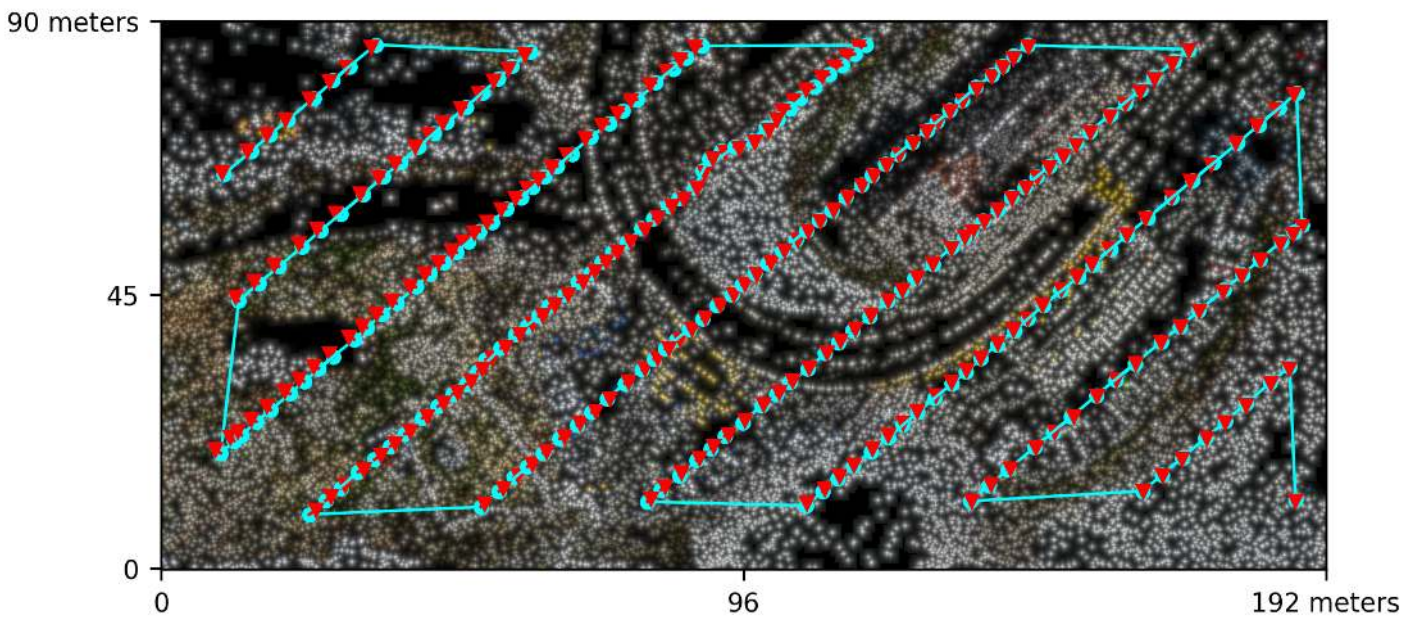
Processing: 3:17:50

Dataset Summary

Date	01/06/2026 at 16:53:23
Area Covered	0.013858 km ²
Processing Time	2.0h:52.0m:6.0s
Capture Start	31/05/2026 at 10:56:57
Capture End	31/05/2026 at 11:05:42

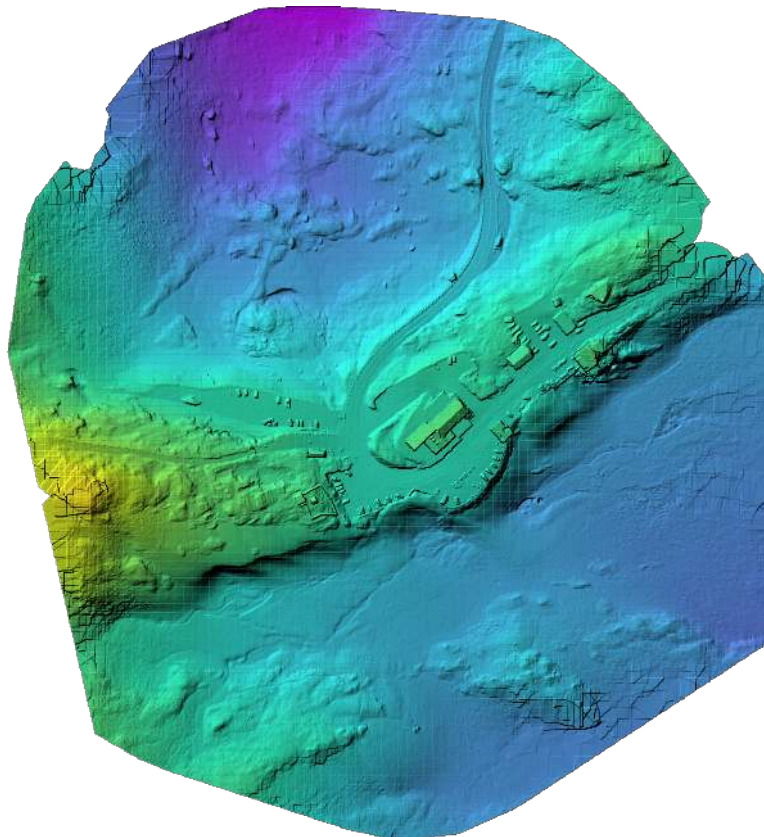
Processing Summary

Reconstructed Images	236 over 236 shots (100.0%)
Reconstructed Points (Sparse)	457135 over 467321 points (97.8%)
Reconstructed Points (Dense)	142,872,340 points
Average Ground Sampling Distance (GSD)	2.8 cm
Detected Features	16,000 features
Reconstructed Features	10,430 features
Geographic Reference	GPS
GPS errors	1.35 meters



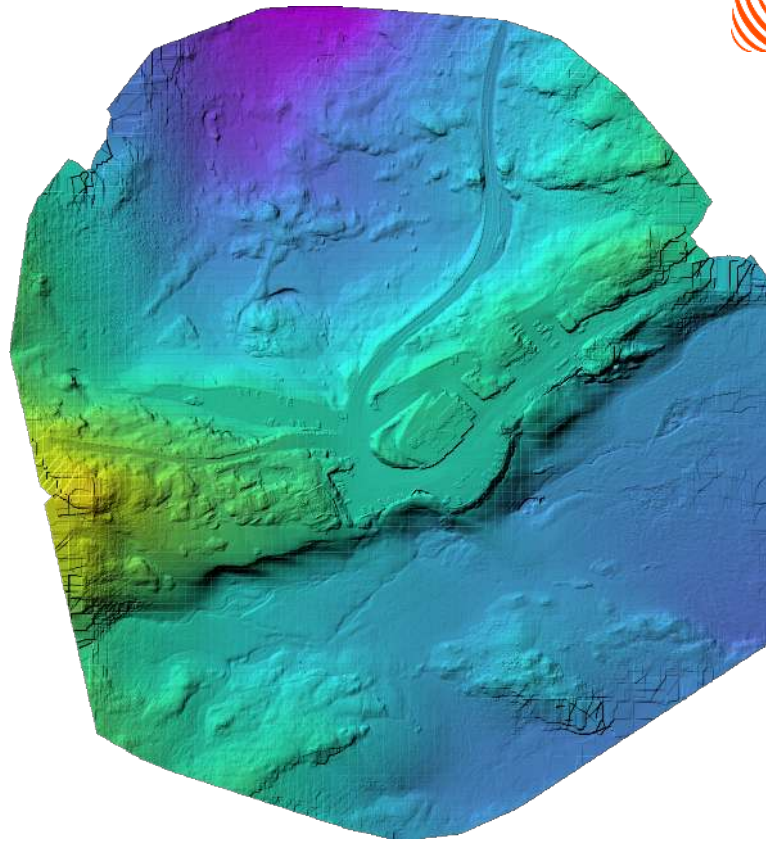


Orthophoto



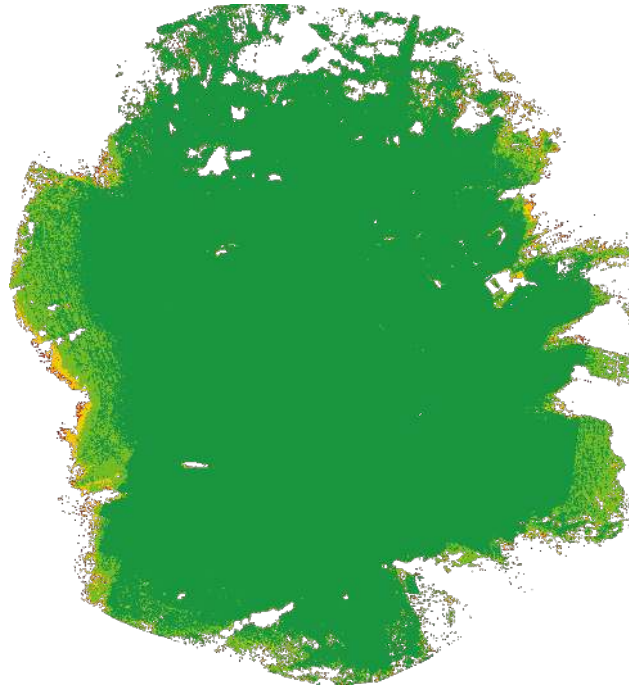
Digital Surface Model





Digital Terrain Model



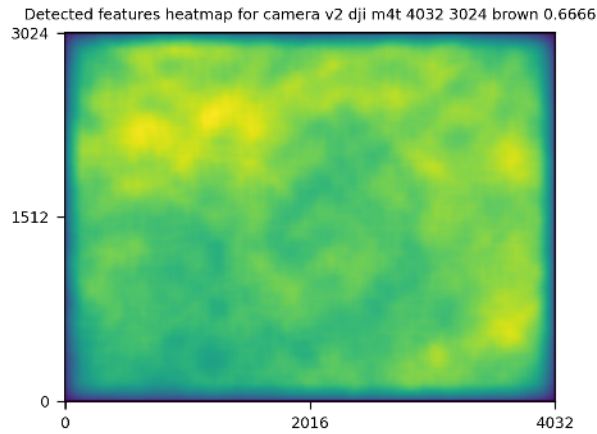


GPS/GCP/3D Errors Details

GPS	Mean	Standard Deviation	RMS Error
X Error (meters)	-0.000	0.600	0.600
Y Error (meters)	-0.000	0.274	0.274
Z Error (meters)	0.001	1.380	1.380
Total			1.353

3D	Mean	Standard Deviation	RMS Error
X Error (meters)	0.185	0.597	0.625
Y Error (meters)	0.350	1.018	1.076
Z Error (meters)	0.212	0.288	0.358
Total			0.489

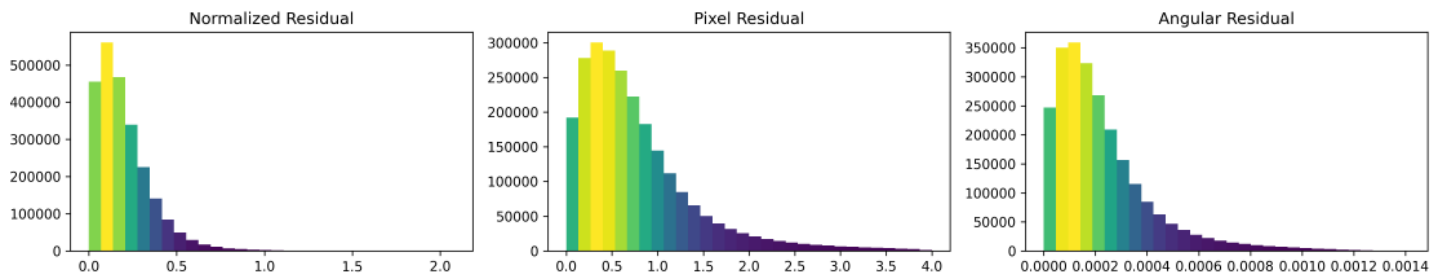
	Absolute	Relative
Horizontal Accuracy CE90 (meters)	0.999	0.811
Vertical Accuracy LE90 (meters)	2.126	0.424

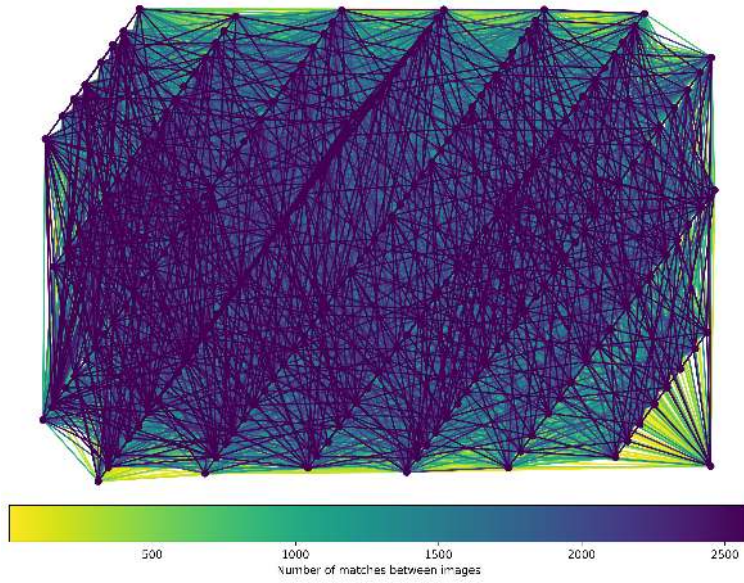


	Min.	Max.	Mean	Median
Detected	16000	16000	16000	16000
Reconstructed	7940	12438	10446	10430

Reconstruction Details

Average Reprojection Error (normalized / pixels / angular)	0.20 / 0.76 / 0.00023
Average Track Length	5.39 images
Average Track Length (> 2)	7.92 images



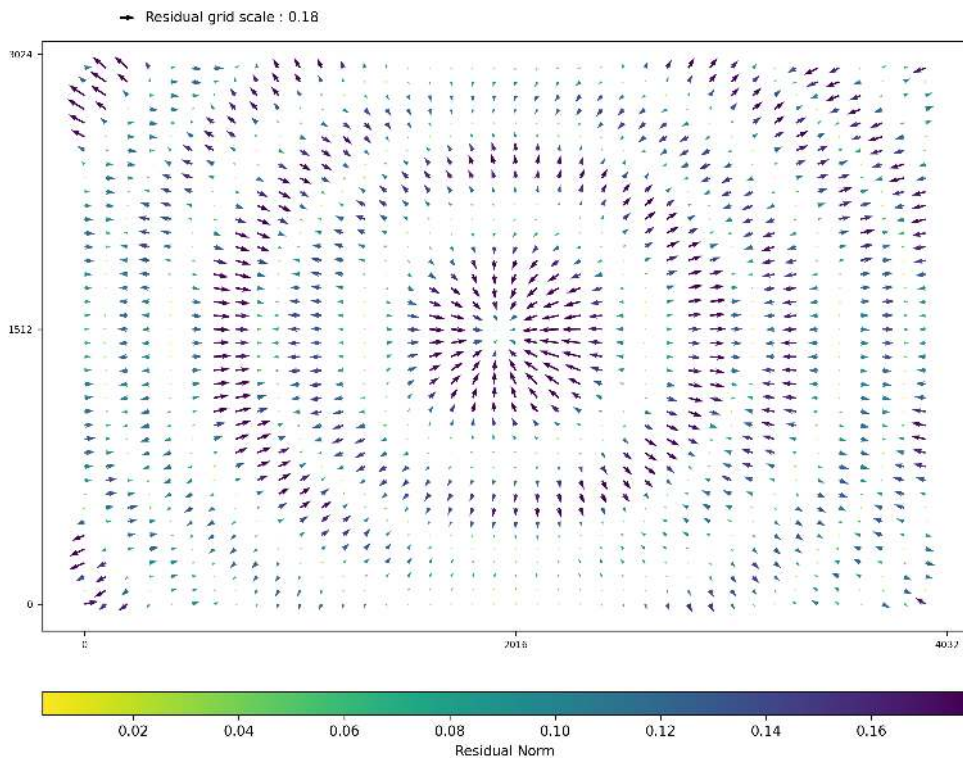


Length	2	3	4	5	6	7	8	9	10
Count	195322	83150	46494	27689	19689	12863	9766	8026	6581

Camera Models Details

v2 dji m4t 4032 3024 brown 0.6666

	k1	k2	k3	p1	p2	focal	aspect_ratio	cx	cy
Initial	0.0000	0.0000	0.0000	0.0000	0.0000	0.6667	1.0000	0.0000	0.0000
Optimized	0.0935	-0.1473	0.0990	0.0003	-0.0003	0.6978	1.0000	0.0000	-0.0003



Photogrammetry Report

grimsel G3 ultra

Generated: 2026-06-01 18:41 UTC

Images: 163

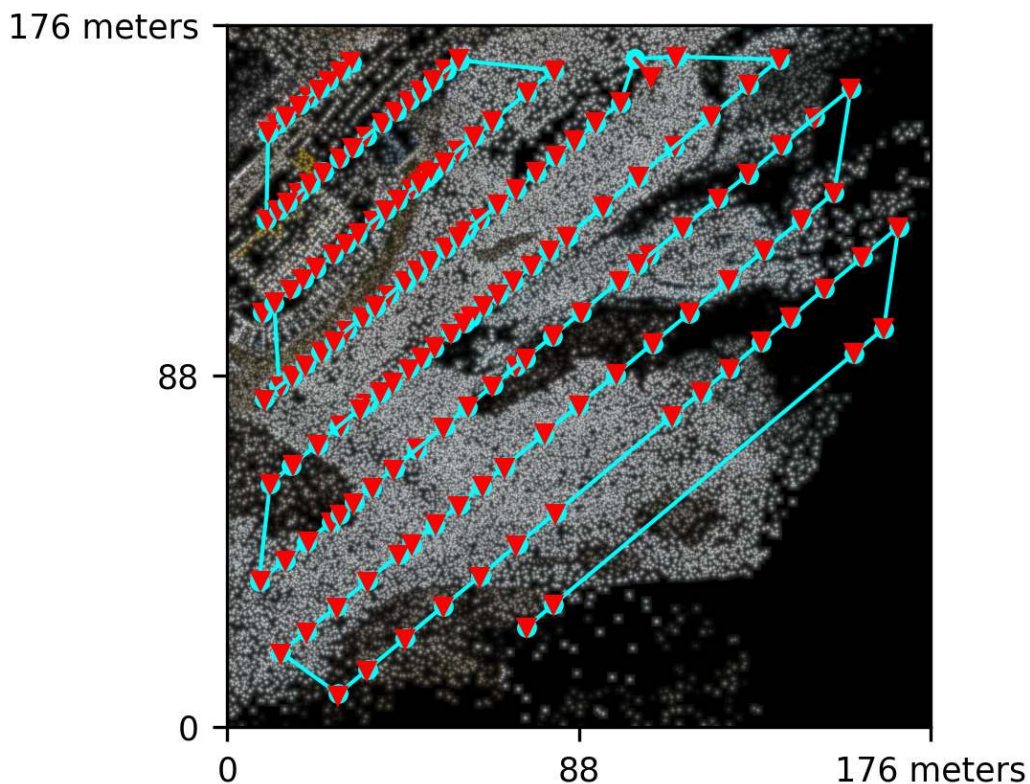
Processing: 2:00:16

Dataset Summary

Date	01/06/2026 at 16:44:08
Area Covered	0.025661 km ²
Processing Time	1.0h:48.0m:19.0s
Capture Start	31/05/2026 at 11:02:04
Capture End	31/05/2026 at 11:07:55

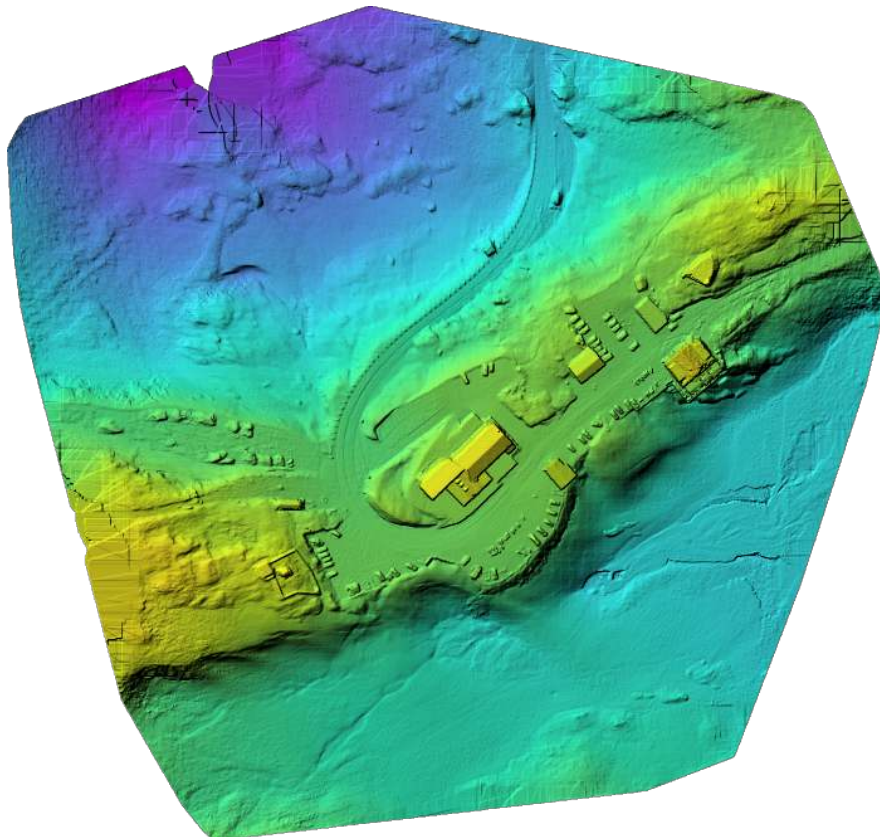
Processing Summary

Reconstructed Images	163 over 163 shots (100.0%)
Reconstructed Points (Sparse)	299953 over 305818 points (98.1%)
Reconstructed Points (Dense)	93,714,801 points
Average Ground Sampling Distance (GSD)	2.8 cm
Detected Features	16,000 features
Reconstructed Features	10,793 features
Geographic Reference	GPS
GPS errors	0.26 meters



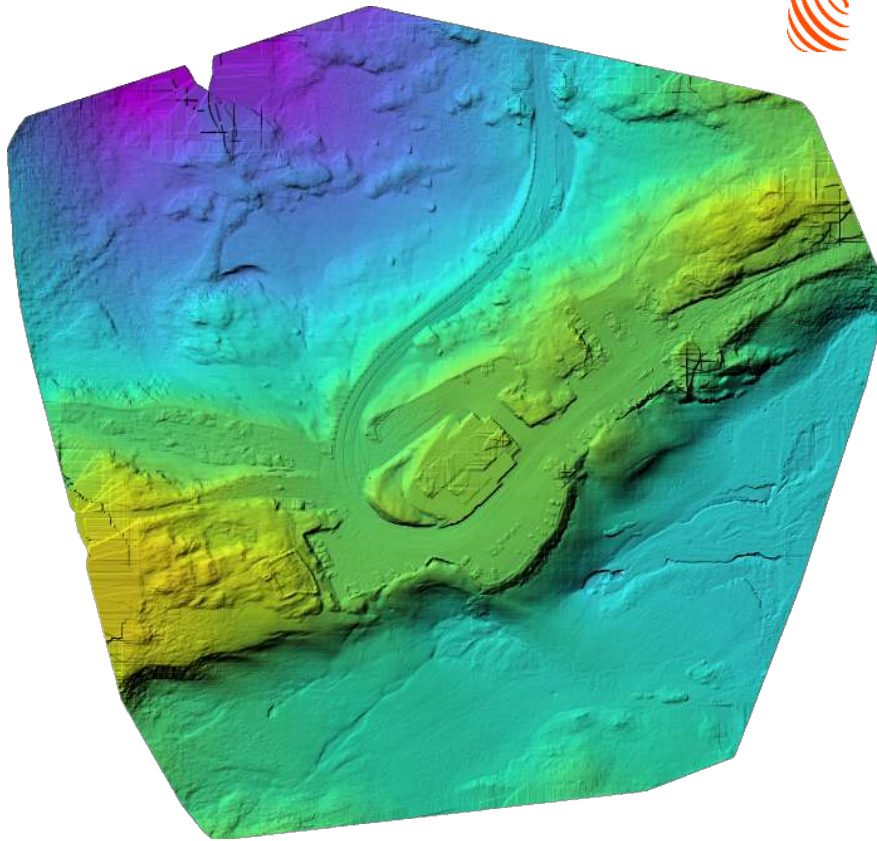


Orthophoto



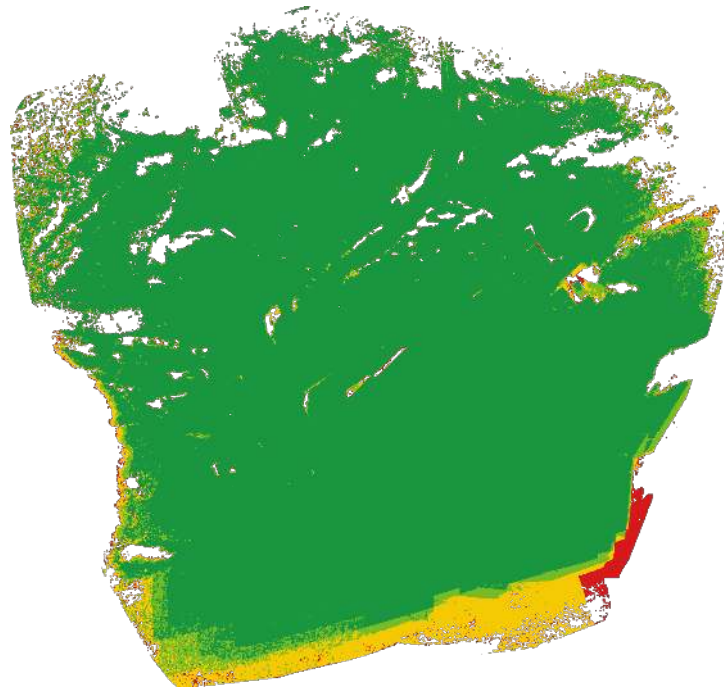
Digital Surface Model





Digital Terrain Model





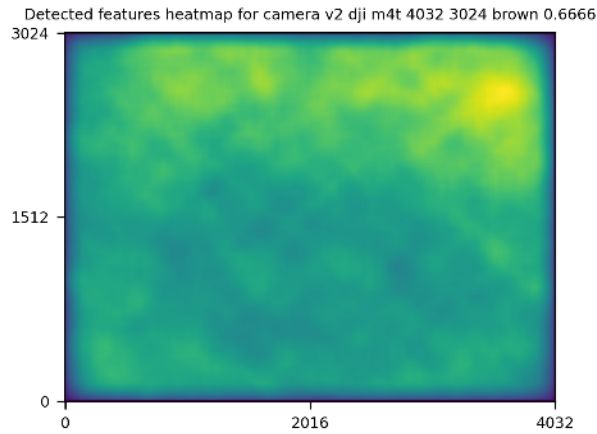
■ 2 ■ 3 ■ 4 ■ 5+

GPS/GCP/3D Errors Details

GPS	Mean	Standard Deviation	RMS Error
X Error (meters)	-0.002	0.346	0.346
Y Error (meters)	0.001	0.387	0.387
Z Error (meters)	-0.001	0.440	0.440
Total			0.264

3D	Mean	Standard Deviation	RMS Error
X Error (meters)	0.130	0.577	0.592
Y Error (meters)	0.132	0.394	0.416
Z Error (meters)	0.139	0.301	0.332
Total			0.264

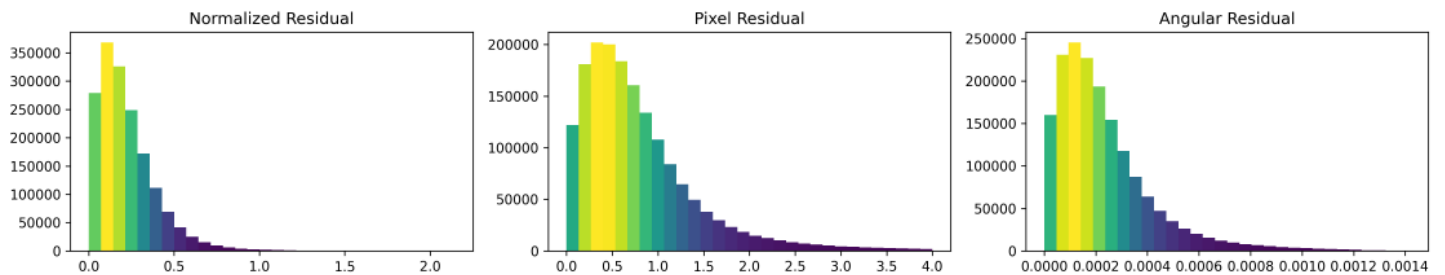
	Absolute	Relative
Horizontal Accuracy CE90 (meters)	0.292	0.467
Vertical Accuracy LE90 (meters)	0.164	0.286

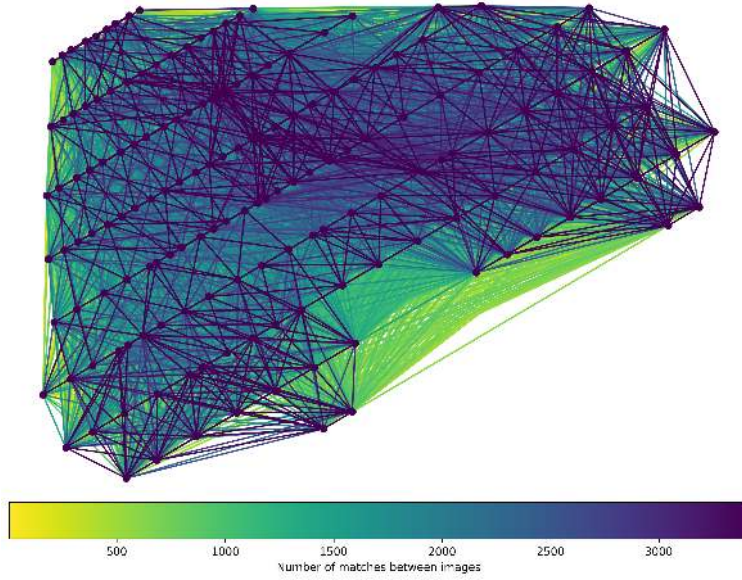


	Min.	Max.	Mean	Median
Detected	16000	16000	16000	16000
Reconstructed	2741	12419	10616	10793

Reconstruction Details

Average Reprojection Error (normalized / pixels / angular)	0.22 / 0.78 / 0.00023
Average Track Length	5.77 images
Average Track Length (> 2)	8.37 images



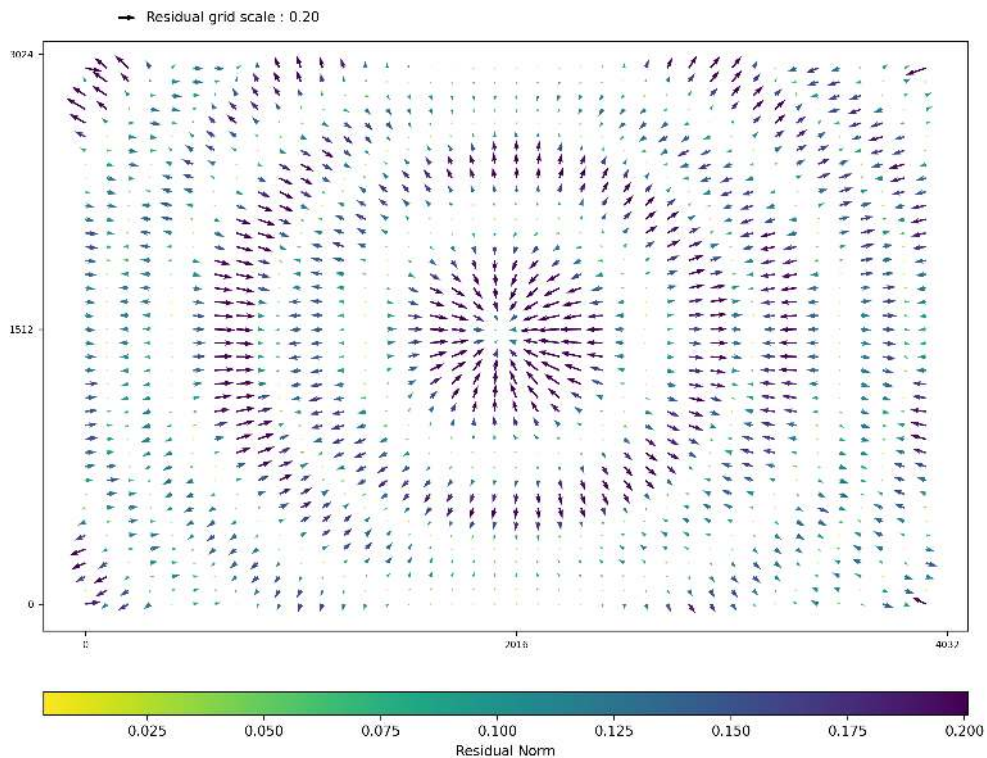


Length	2	3	4	5	6	7	8	9	10
Count	122392	51578	30337	18559	12941	9581	7636	5910	4789

Camera Models Details

v2 dji m4t 4032 3024 brown 0.6666

	k1	k2	k3	p1	p2	focal	aspect_ratio	cx	cy
Initial	0.0000	0.0000	0.0000	0.0000	0.0000	0.6667	1.0000	0.0000	0.0000
Optimized	0.0954	-0.1511	0.1020	0.0003	-0.0003	0.6967	1.0000	0.0001	-0.0002



Photogrammetry Report

grimsel G4 ultra

Generated: 2026-06-01 19:17 UTC

Images: 197

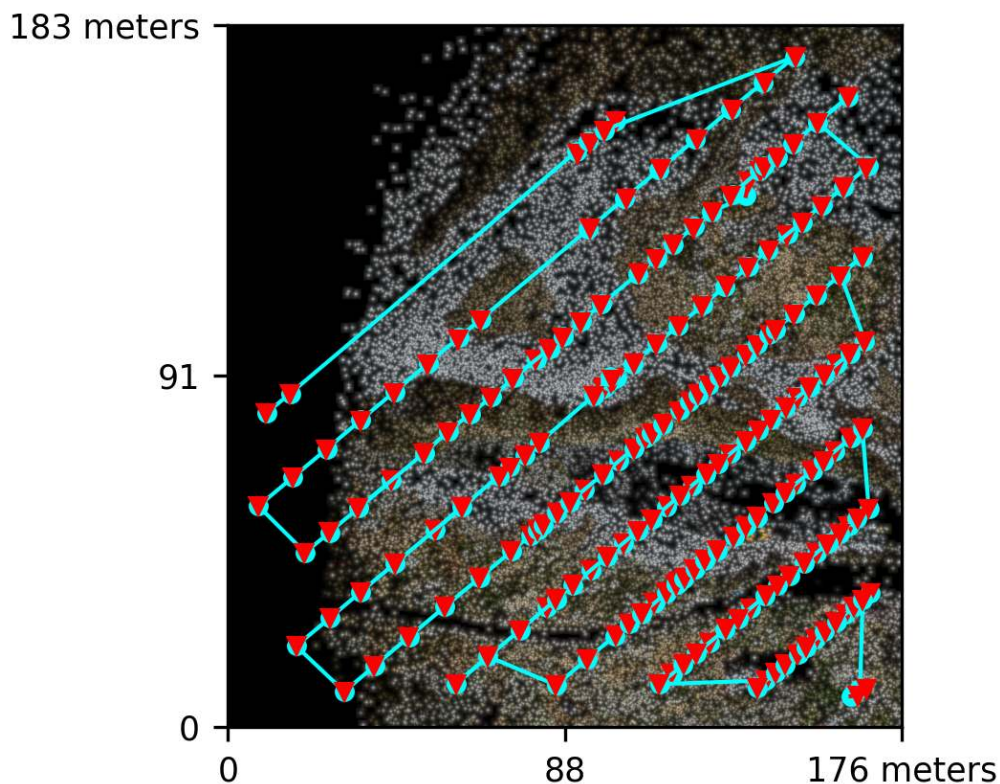
Processing: 2:28:01

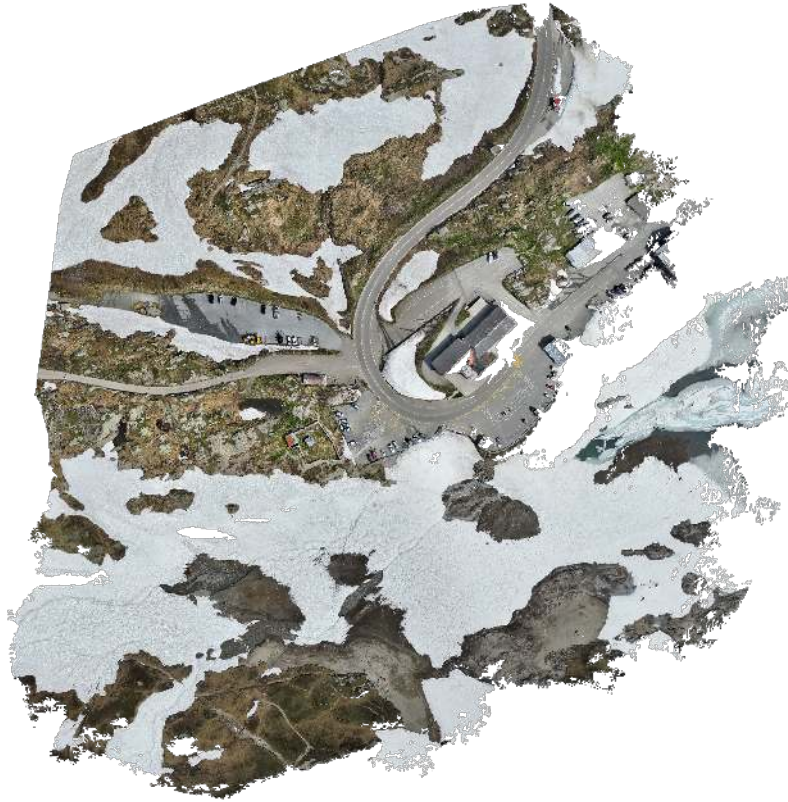
Dataset Summary

Date	01/06/2026 at 16:51:53
Area Covered	0.026664 km ²
Processing Time	2.0h:10.0m:54.0s
Capture Start	31/05/2026 at 10:52:54
Capture End	31/05/2026 at 11:00:16

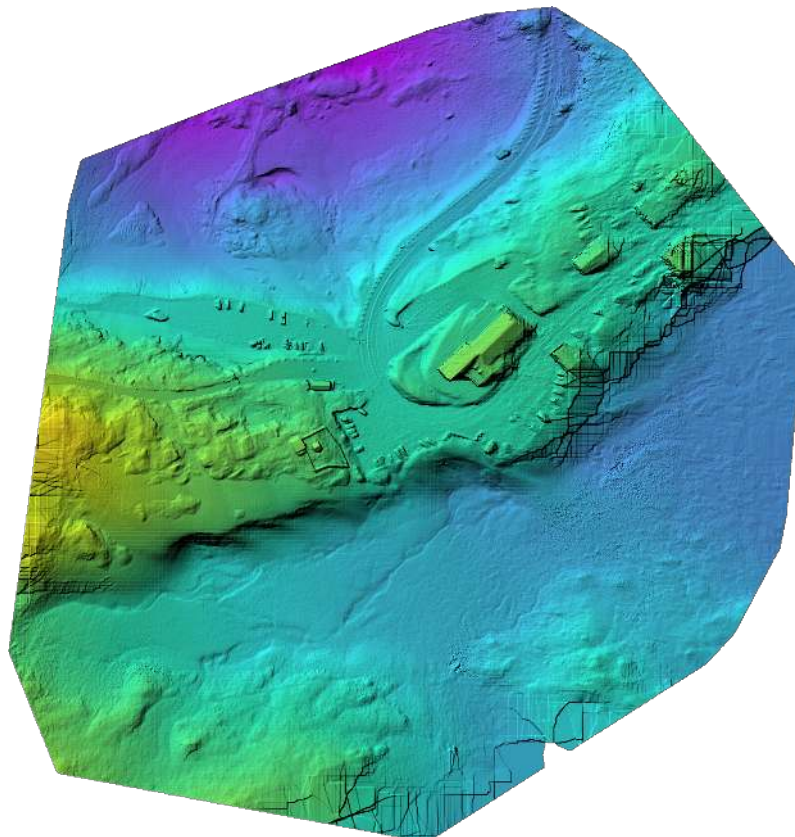
Processing Summary

Reconstructed Images	197 over 197 shots (100.0%)
Reconstructed Points (Sparse)	324937 over 334289 points (97.2%)
Reconstructed Points (Dense)	121,437,315 points
Average Ground Sampling Distance (GSD)	2.9 cm
Detected Features	16,000 features
Reconstructed Features	10,908 features
Geographic Reference	GPS
GPS errors	0.29 meters



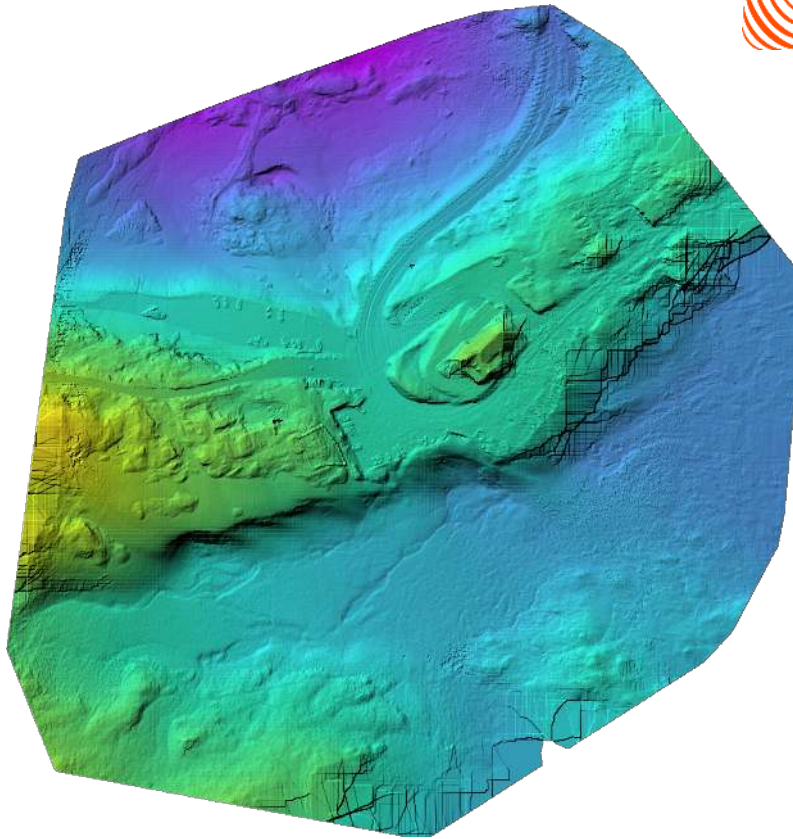


Orthophoto



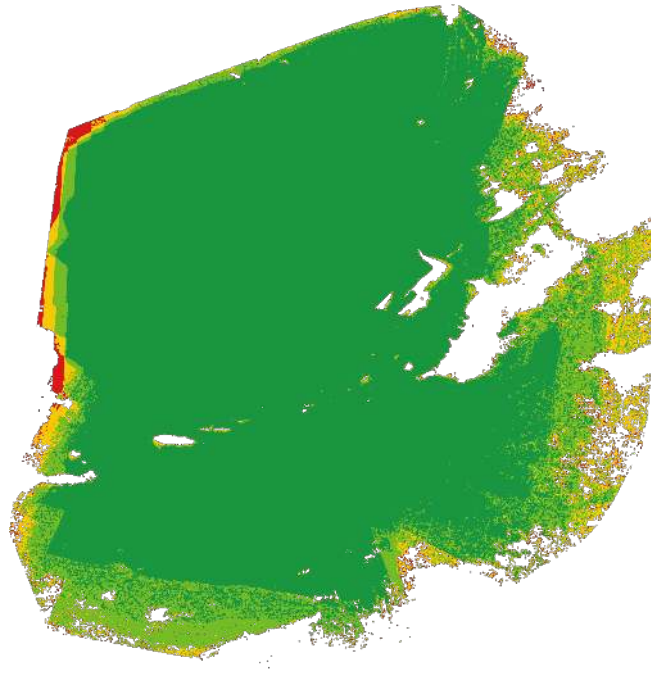
Digital Surface Model





Digital Terrain Model





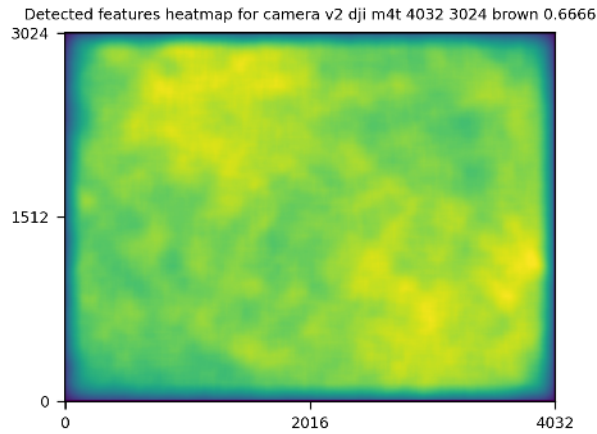
■ 2 ■ 3 ■ 4 ■ 5+

GPS/GCP/3D Errors Details

GPS	Mean	Standard Deviation	RMS Error
X Error (meters)	0.001	0.245	0.245
Y Error (meters)	0.001	0.326	0.326
Z Error (meters)	-0.001	0.458	0.458
Total			0.289

3D	Mean	Standard Deviation	RMS Error
X Error (meters)	0.158	0.383	0.414
Y Error (meters)	0.136	0.341	0.367
Z Error (meters)	0.201	0.486	0.526
Total			0.331

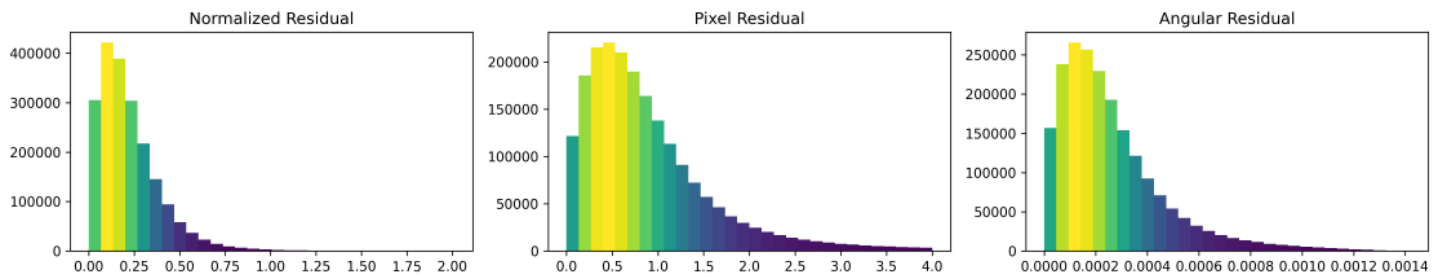
	Absolute	Relative
Horizontal Accuracy CE90 (meters)	0.375	0.509
Vertical Accuracy LE90 (meters)	0.205	0.400

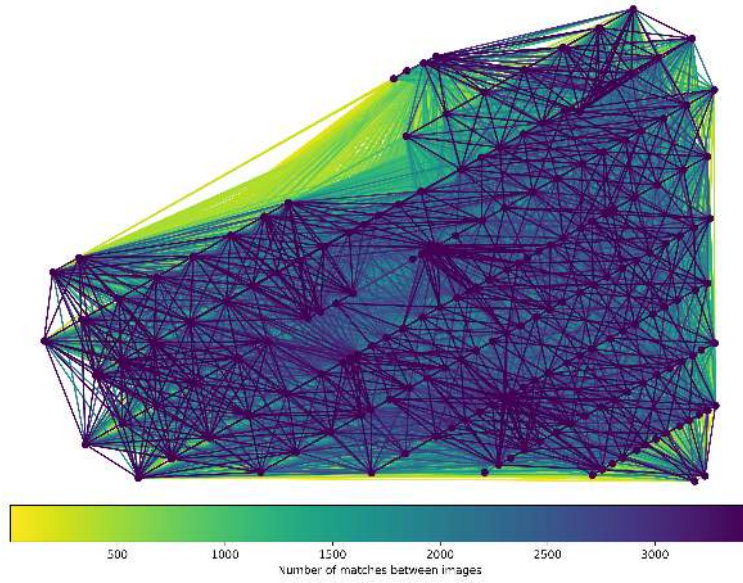


	Min.	Max.	Mean	Median
Detected	16000	16000	16000	16000
Reconstructed	3091	12431	10679	10908

Reconstruction Details

Average Reprojection Error (normalized / pixels / angular)	0.22 / 0.88 / 0.00026
Average Track Length	6.47 images
Average Track Length (> 2)	9.26 images



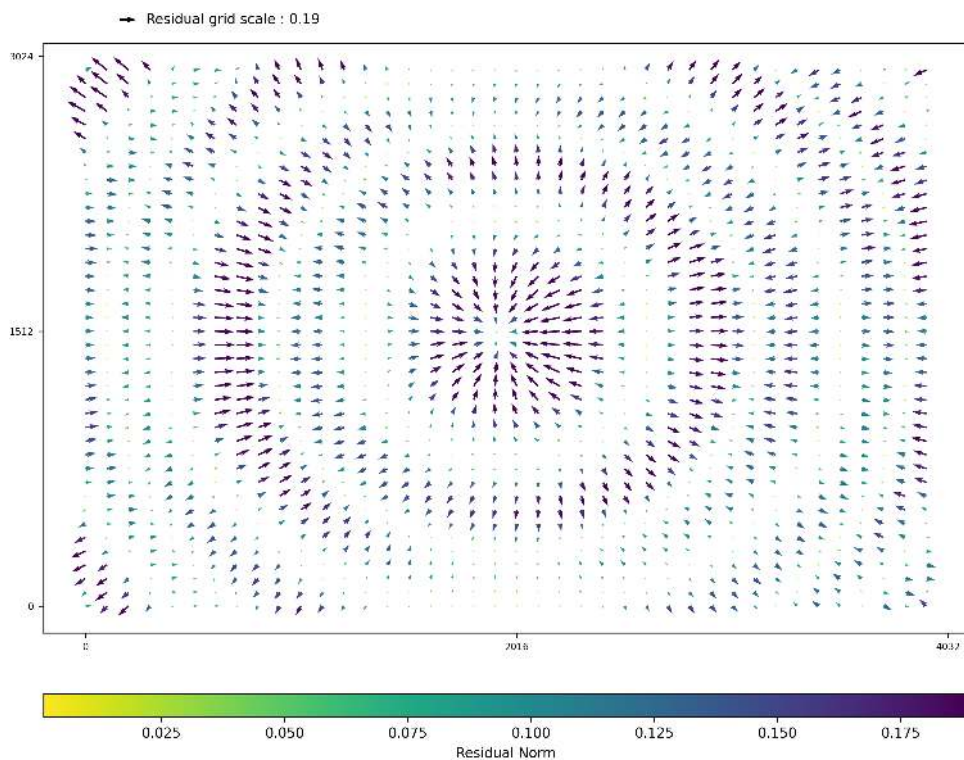


Length	2	3	4	5	6	7	8	9	10
Count	124742	57623	30411	19794	14855	10650	8616	6831	5589

Camera Models Details

v2 dji m4t 4032 3024 brown 0.6666

	k1	k2	k3	p1	p2	focal	aspect_ratio	cx	cy
Initial	0.0000	0.0000	0.0000	0.0000	0.0000	0.6667	1.0000	0.0000	0.0000
Optimized	0.0911	-0.1453	0.0984	0.0003	-0.0004	0.6987	1.0000	-0.0004	-0.0001



Photogrammetry Report

grimsel G5_1 ultra

Generated: 2026-06-01 19:17 UTC

Images: 170

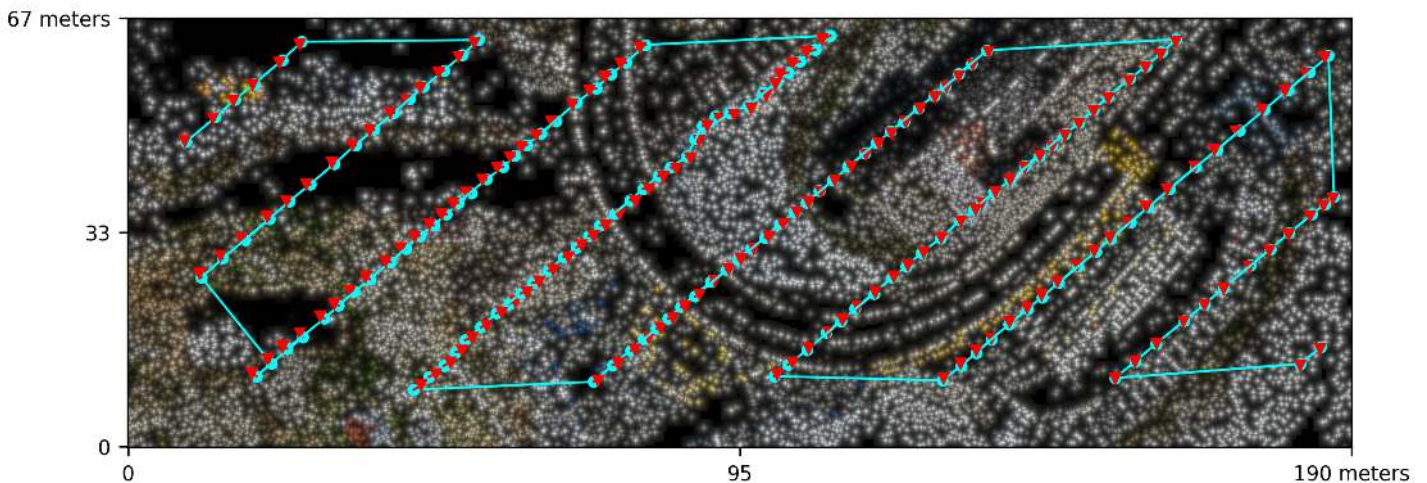
Processing: 2:25:41

Dataset Summary

Date	01/06/2026 at 16:45:56
Area Covered	0.009797 km ²
Processing Time	2.0h:10.0m:29.0s
Capture Start	31/05/2026 at 10:56:57
Capture End	31/05/2026 at 11:05:09

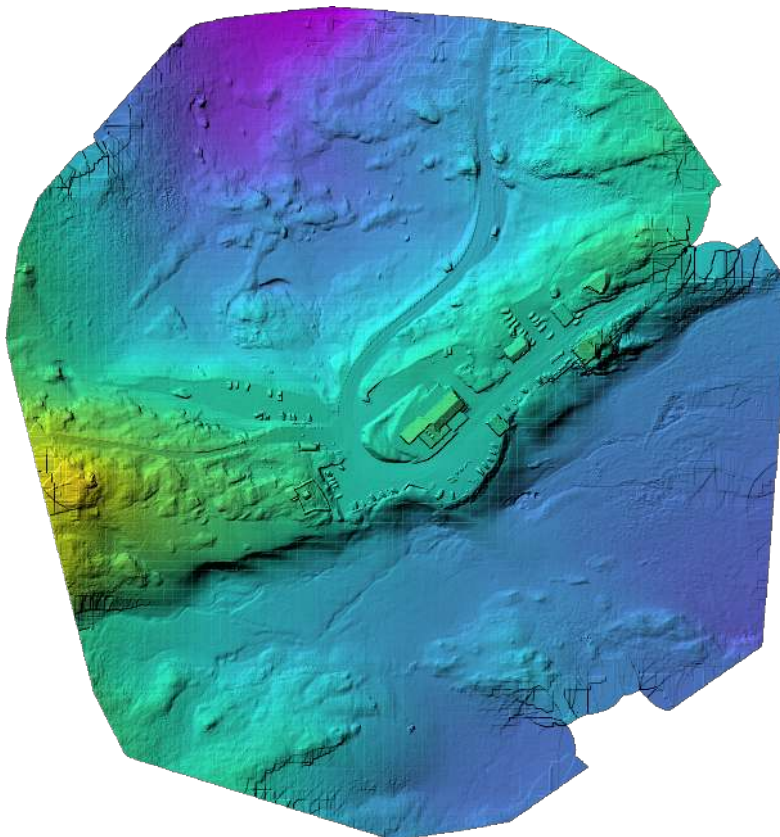
Processing Summary

Reconstructed Images	170 over 170 shots (100.0%)
Reconstructed Points (Sparse)	343309 over 349875 points (98.1%)
Reconstructed Points (Dense)	101,963,422 points
Average Ground Sampling Distance (GSD)	2.8 cm
Detected Features	16,000 features
Reconstructed Features	10,487 features
Geographic Reference	GPS
GPS errors	1.31 meters



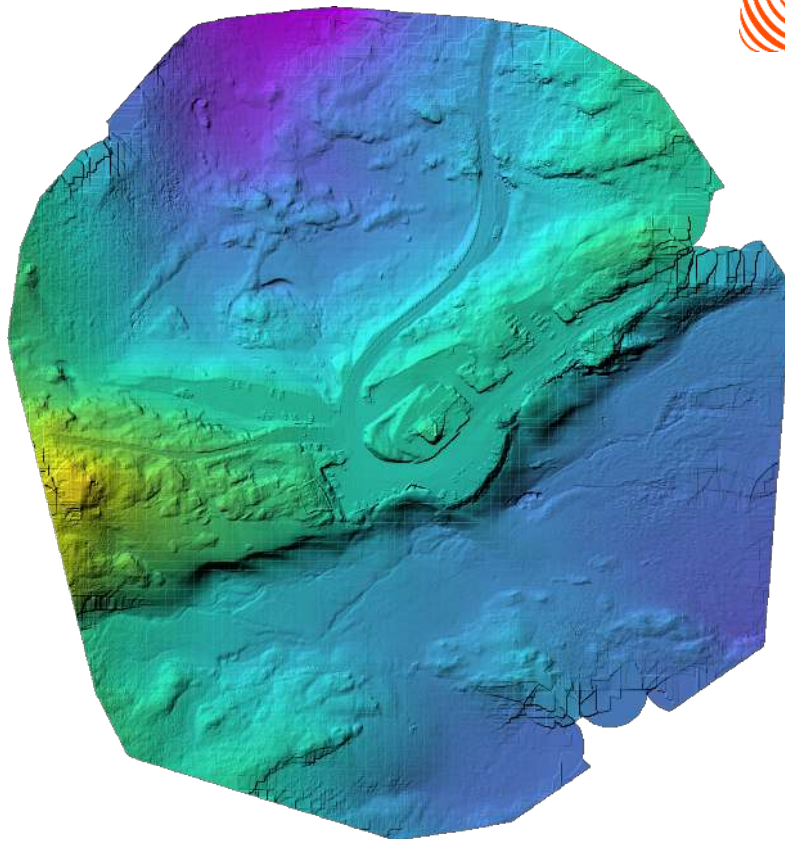


Orthophoto



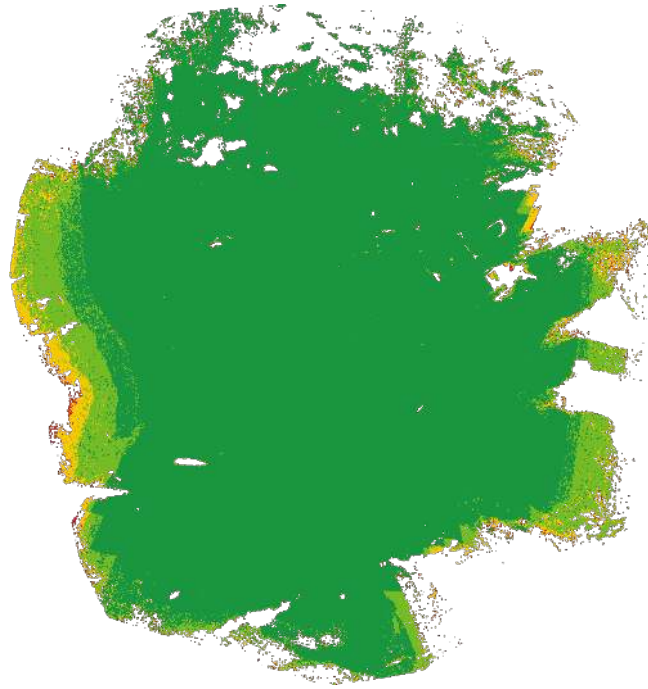
Digital Surface Model





Digital Terrain Model





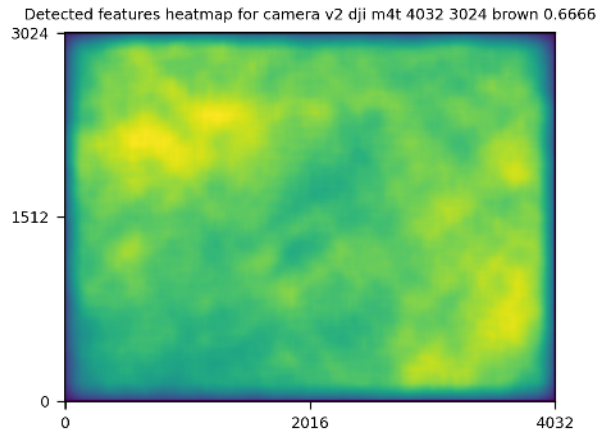
■ 2 ■ 3 ■ 4 ■ 5+

GPS/GCP/3D Errors Details

GPS	Mean	Standard Deviation	RMS Error
X Error (meters)	0.000	0.570	0.570
Y Error (meters)	-0.000	0.239	0.239
Z Error (meters)	0.000	1.363	1.363
Total			1.310

3D	Mean	Standard Deviation	RMS Error
X Error (meters)	0.144	0.303	0.336
Y Error (meters)	0.167	0.509	0.536
Z Error (meters)	0.174	0.246	0.302
Total			0.326

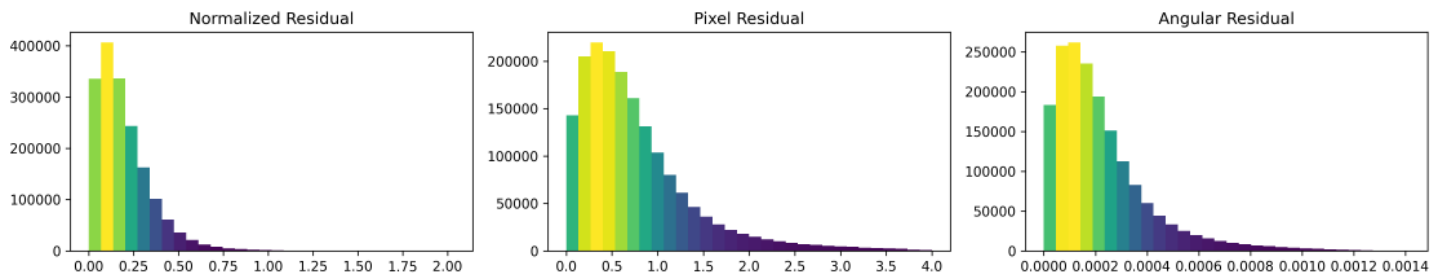
	Absolute	Relative
Horizontal Accuracy CE90 (meters)	0.915	0.572
Vertical Accuracy LE90 (meters)	2.176	0.375

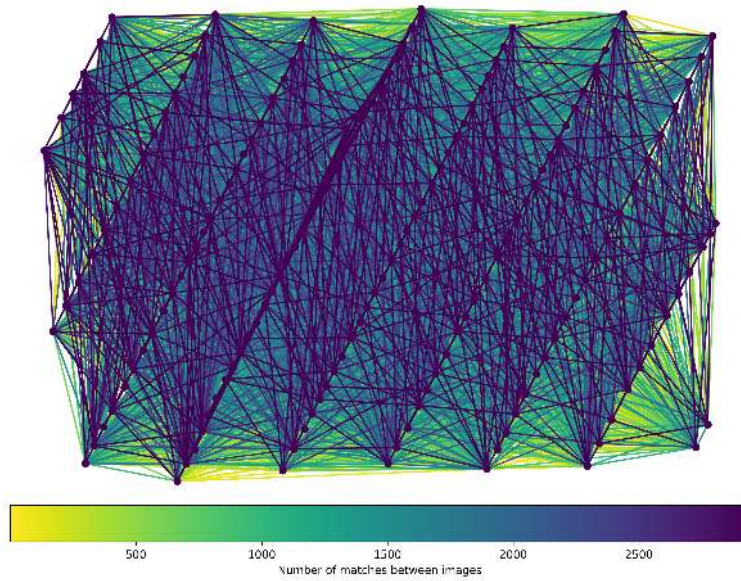


	Min.	Max.	Mean	Median
Detected	16000	16000	16000	16000
Reconstructed	4703	12531	10486	10487

Reconstruction Details

Average Reprojection Error (normalized / pixels / angular)	0.20 / 0.75 / 0.00022
Average Track Length	5.19 images
Average Track Length (> 2)	7.53 images



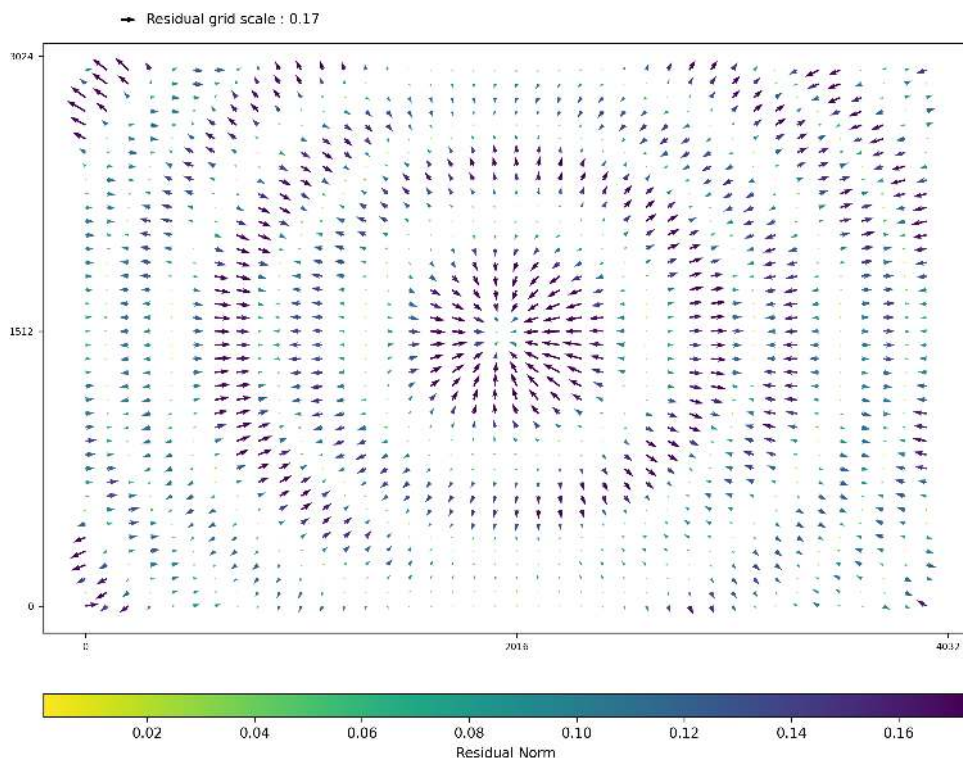


Length	2	3	4	5	6	7	8	9	10
Count	145082	63368	34267	22519	14223	10312	7192	5874	4739

Camera Models Details

v2 dji m4t 4032 3024 brown 0.6666

	k1	k2	k3	p1	p2	focal	aspect_ratio	cx	cy
Initial	0.0000	0.0000	0.0000	0.0000	0.0000	0.6667	1.0000	0.0000	0.0000
Optimized	0.0932	-0.1463	0.0978	0.0003	-0.0003	0.6978	1.0000	-0.0000	-0.0004



Photogrammetry Report

grimsel G5_2 ultra

Generated: 2026-06-01 19:27 UTC

Images: 193

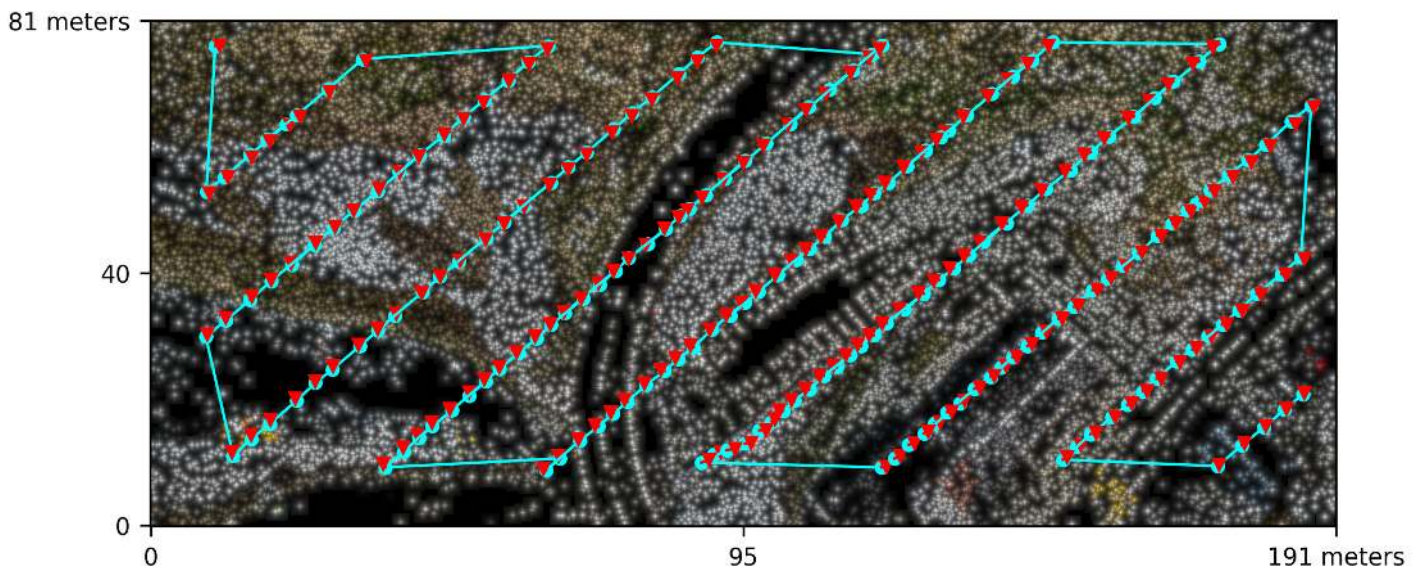
Processing: 2:35:14

Dataset Summary

Date	01/06/2026 at 16:51:28
Area Covered	0.012277 km ²
Processing Time	2.0h:17.0m:41.0s
Capture Start	31/05/2026 at 10:54:39
Capture End	31/05/2026 at 11:03:28

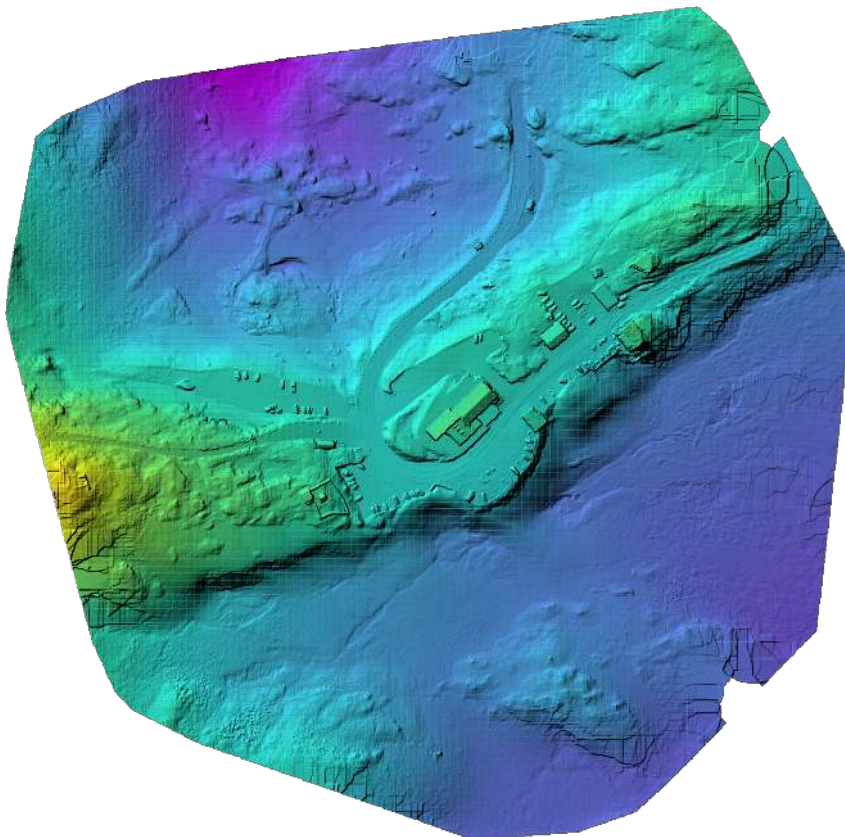
Processing Summary

Reconstructed Images	193 over 193 shots (100.0%)
Reconstructed Points (Sparse)	356944 over 362147 points (98.6%)
Reconstructed Points (Dense)	116,542,492 points
Average Ground Sampling Distance (GSD)	2.8 cm
Detected Features	16,000 features
Reconstructed Features	10,697 features
Geographic Reference	GPS
GPS errors	1.30 meters





Orthophoto

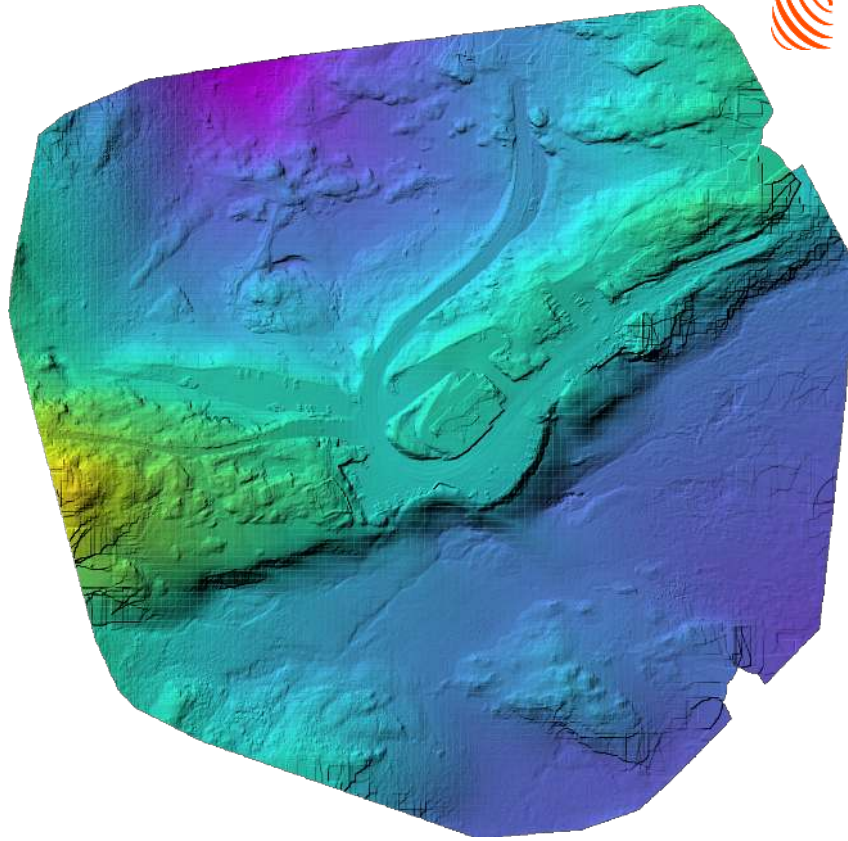


Digital Surface Model



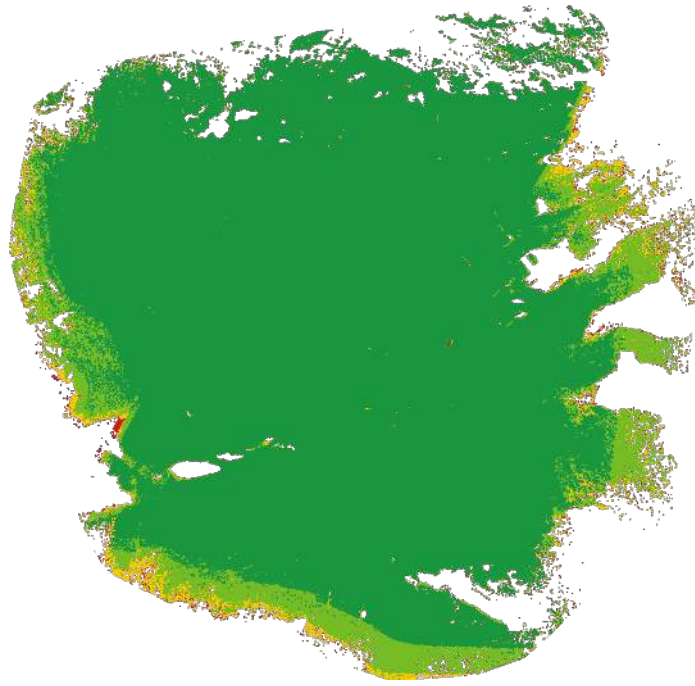
2,176.60m

2,244.88m



Digital Terrain Model





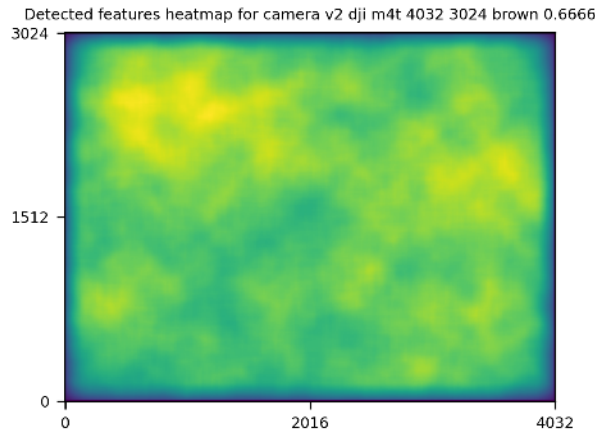
■ 2 ■ 3 ■ 4 ■ 5+

GPS/GCP/3D Errors Details

GPS	Mean	Standard Deviation	RMS Error
X Error (meters)	0.000	0.559	0.559
Y Error (meters)	0.001	0.281	0.281
Z Error (meters)	0.005	1.306	1.306
Total			1.299

3D	Mean	Standard Deviation	RMS Error
X Error (meters)	0.175	0.393	0.430
Y Error (meters)	0.304	0.689	0.754
Z Error (meters)	0.232	0.400	0.463
Total			0.454

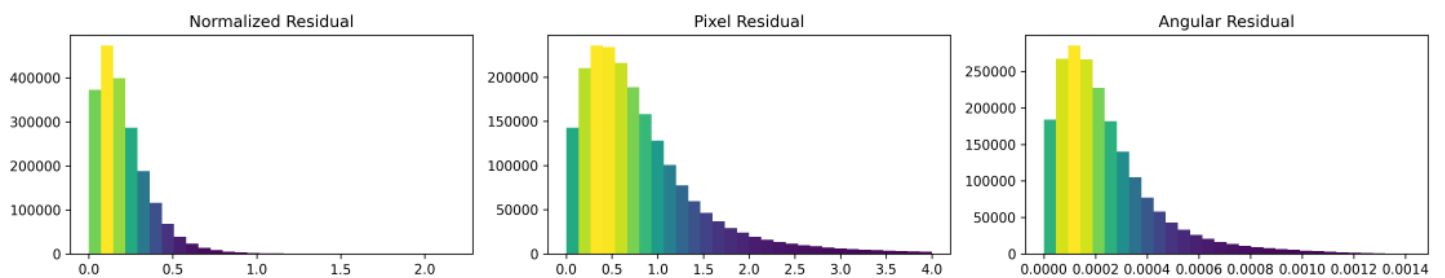
	Absolute	Relative
Horizontal Accuracy CE90 (meters)	0.858	0.892
Vertical Accuracy LE90 (meters)	1.956	0.543

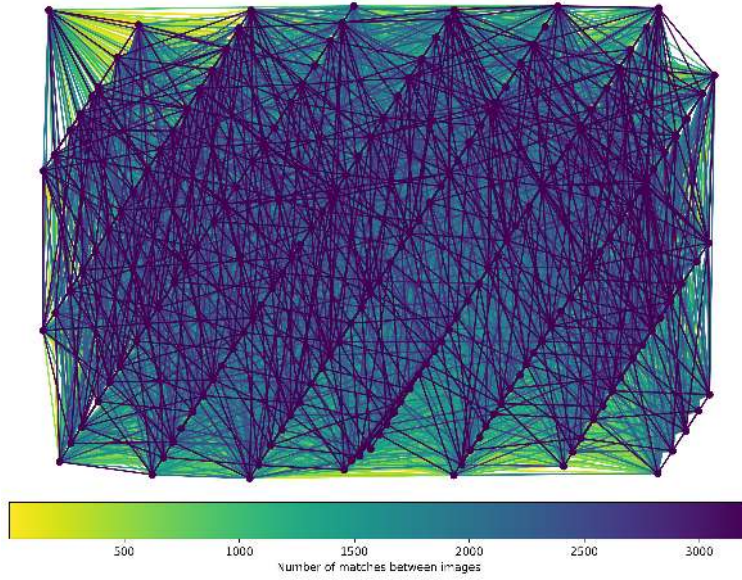


	Min.	Max.	Mean	Median
Detected	16000	16000	16000	16000
Reconstructed	7532	12360	10637	10697

Reconstruction Details

Average Reprojection Error (normalized / pixels / angular)	0.21 / 0.80 / 0.00024
Average Track Length	5.75 images
Average Track Length (> 2)	8.52 images



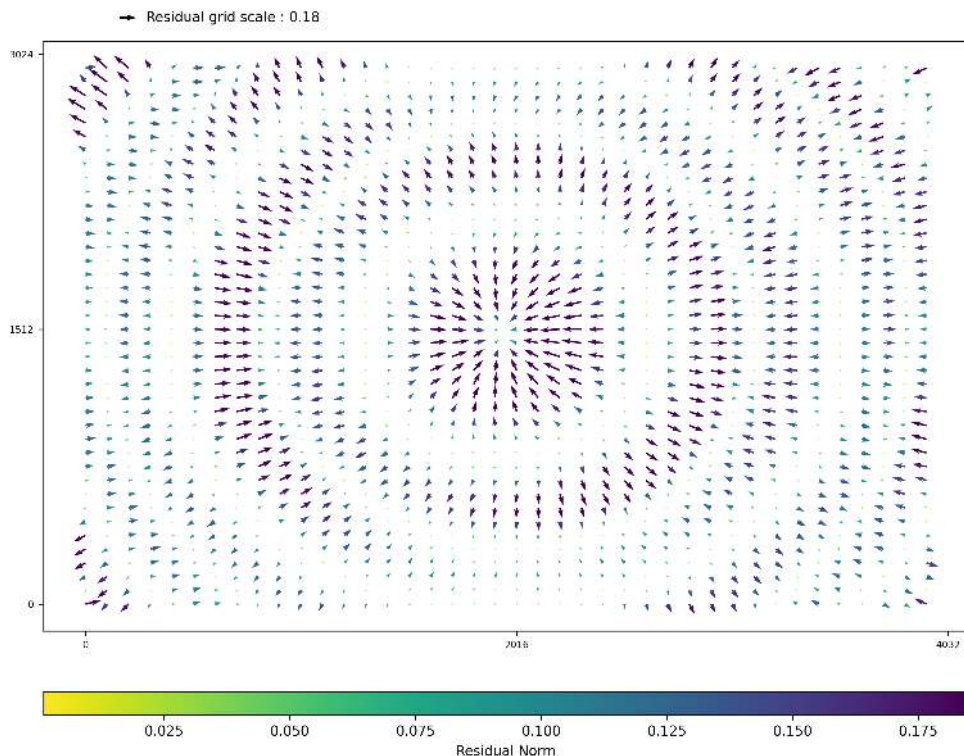


Length	2	3	4	5	6	7	8	9	10
Count	151492	59079	34263	21572	15466	10770	8394	6644	5498

Camera Models Details

v2 dji m4t 4032 3024 brown 0.6666

	k1	k2	k3	p1	p2	focal	aspect_ratio	cx	cy
Initial	0.0000	0.0000	0.0000	0.0000	0.0000	0.6667	1.0000	0.0000	0.0000
Optimized	0.0929	-0.1462	0.0982	0.0003	-0.0003	0.6978	1.0000	-0.0001	-0.0003



Photogrammetry Report

grimsel G5_3 ultra

Generated: 2026-06-01 19:11 UTC

Images: 201

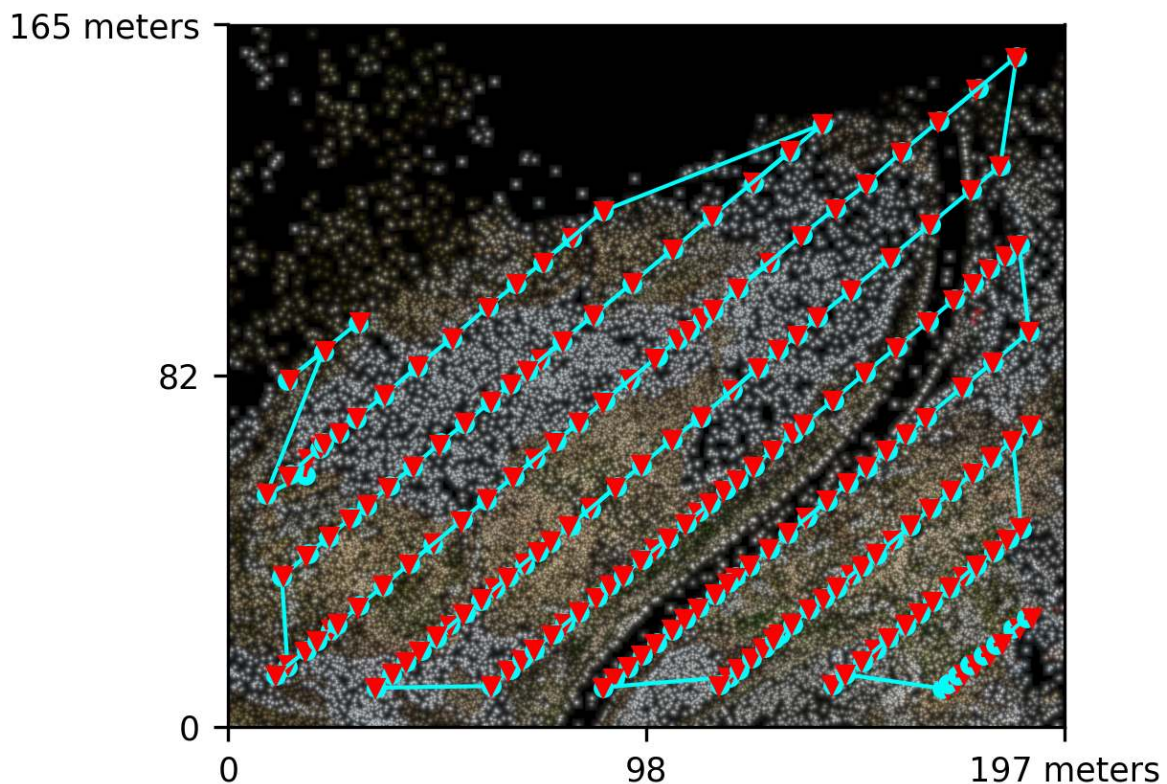
Processing: 2:22:48

Dataset Summary

Date	01/06/2026 at 16:56:06
Area Covered	0.026808 km ²
Processing Time	2.0h:5.0m:27.0s
Capture Start	31/05/2026 at 10:53:20
Capture End	31/05/2026 at 11:01:32

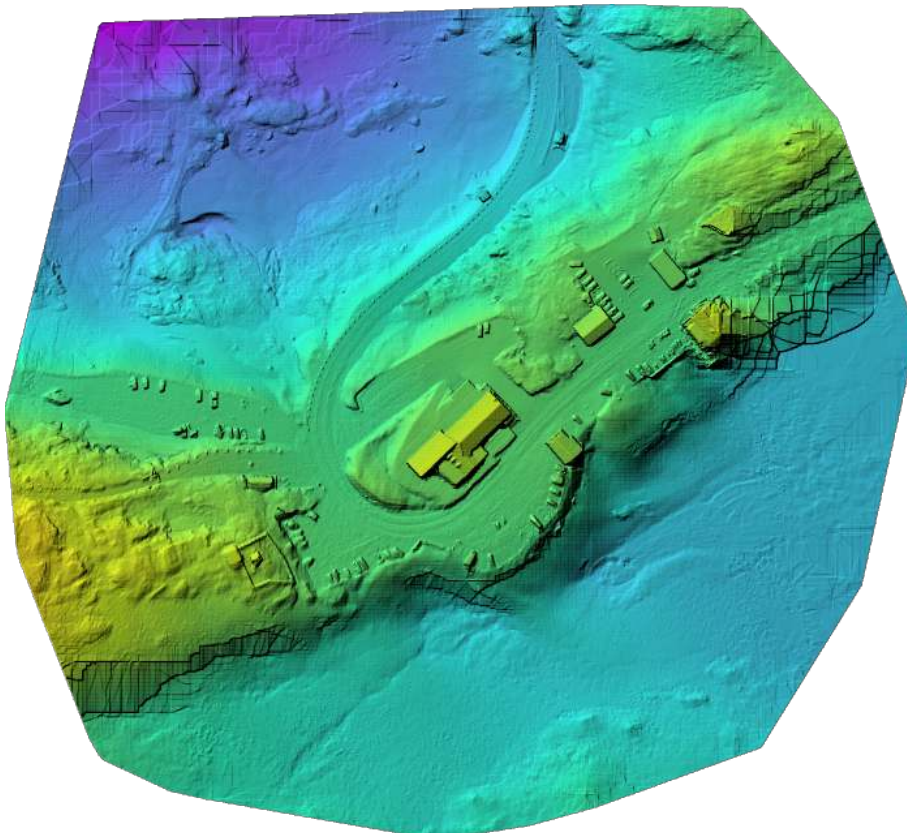
Processing Summary

Reconstructed Images	201 over 201 shots (100.0%)
Reconstructed Points (Sparse)	332301 over 336218 points (98.8%)
Reconstructed Points (Dense)	119,147,119 points
Average Ground Sampling Distance (GSD)	2.8 cm
Detected Features	16,000 features
Reconstructed Features	11,028 features
Geographic Reference	GPS
GPS errors	0.61 meters



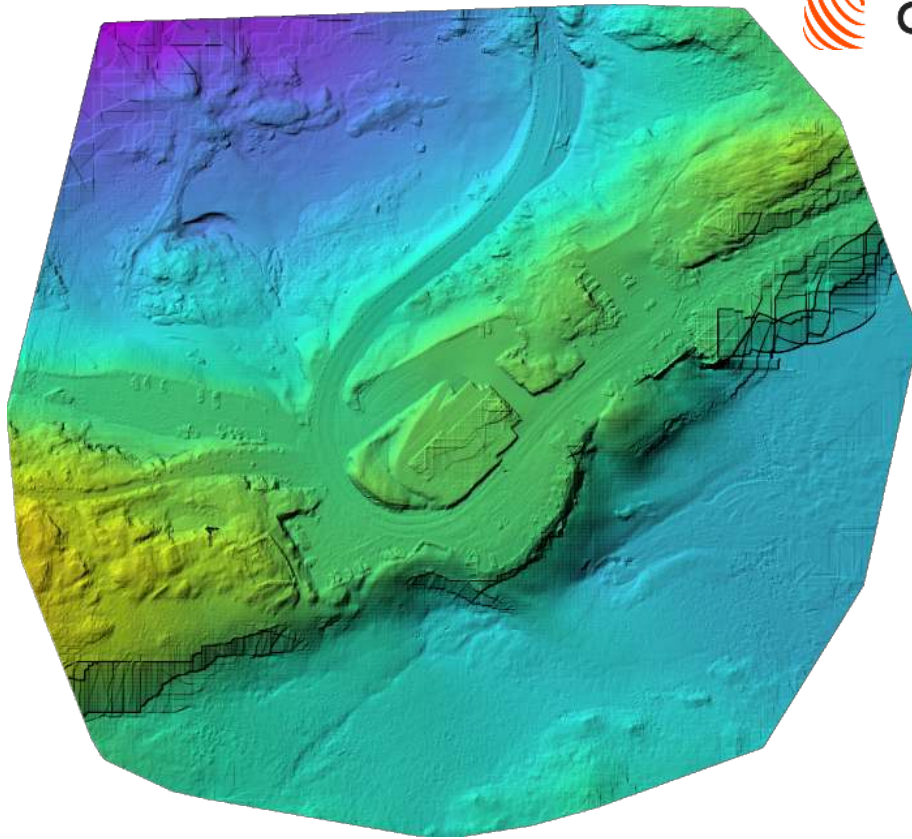


Orthophoto



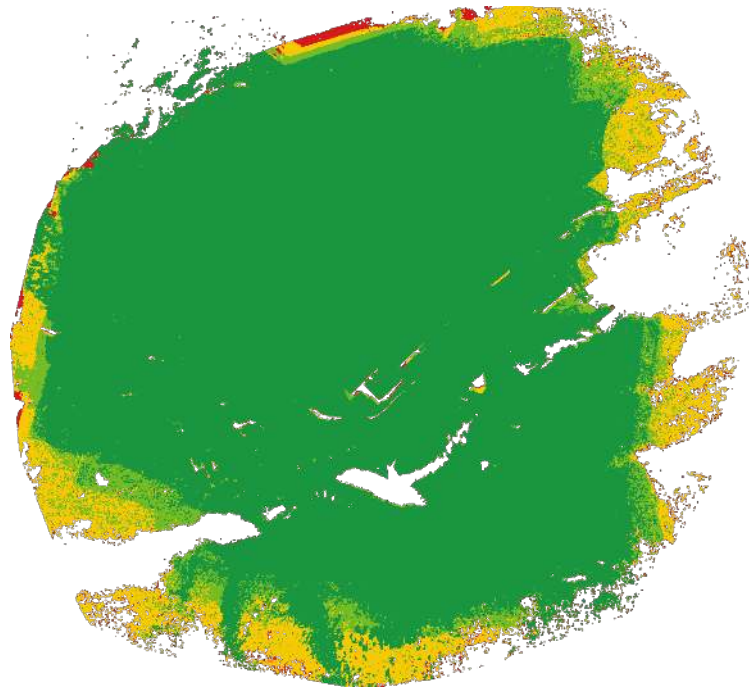
Digital Surface Model





Digital Terrain Model



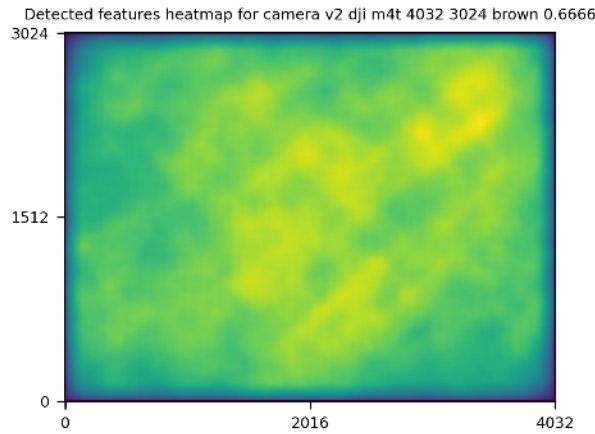


GPS/GCP/3D Errors Details

GPS	Mean	Standard Deviation	RMS Error
X Error (meters)	0.000	0.391	0.391
Y Error (meters)	0.001	0.317	0.317
Z Error (meters)	-0.000	0.825	0.825
Total			0.607

3D	Mean	Standard Deviation	RMS Error
X Error (meters)	0.114	0.356	0.374
Y Error (meters)	0.116	0.250	0.275
Z Error (meters)	0.137	0.244	0.280
Total			0.240

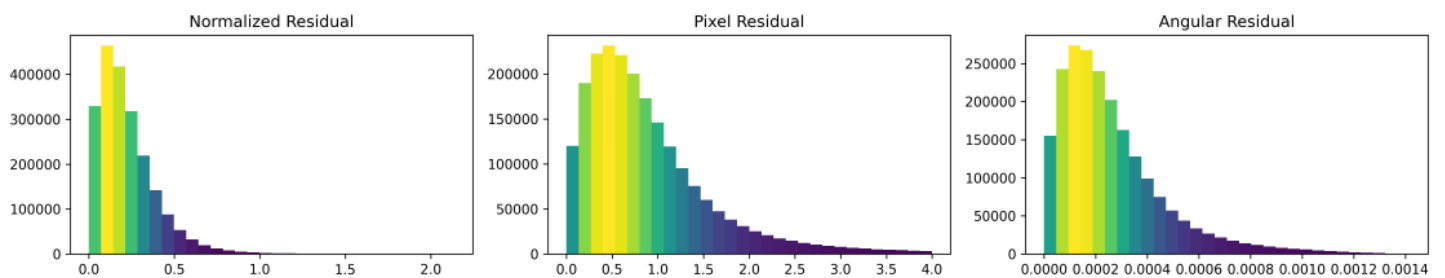
	Absolute	Relative
Horizontal Accuracy CE90 (meters)	0.480	0.404
Vertical Accuracy LE90 (meters)	0.715	0.294

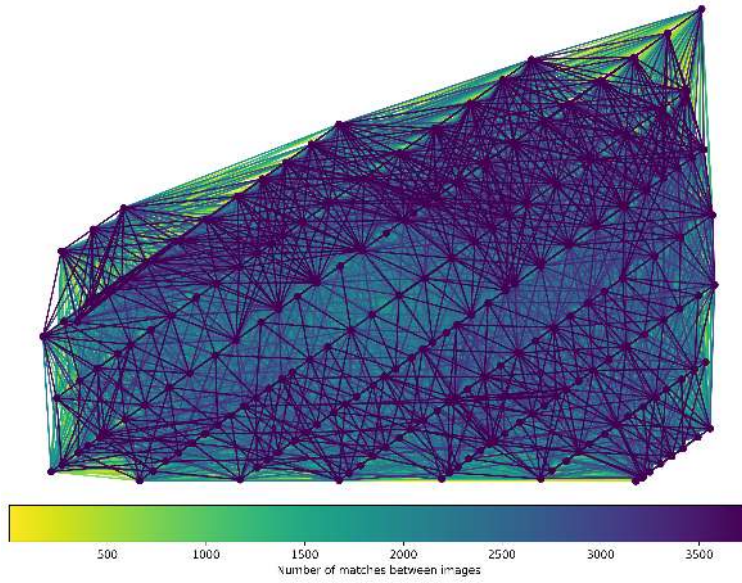


	Min.	Max.	Mean	Median
Detected	16000	16000	16000	16000
Reconstructed	2904	12727	10857	11028

Reconstruction Details

Average Reprojection Error (normalized / pixels / angular)	0.22 / 0.88 / 0.00026
Average Track Length	6.57 images
Average Track Length (> 2)	9.40 images



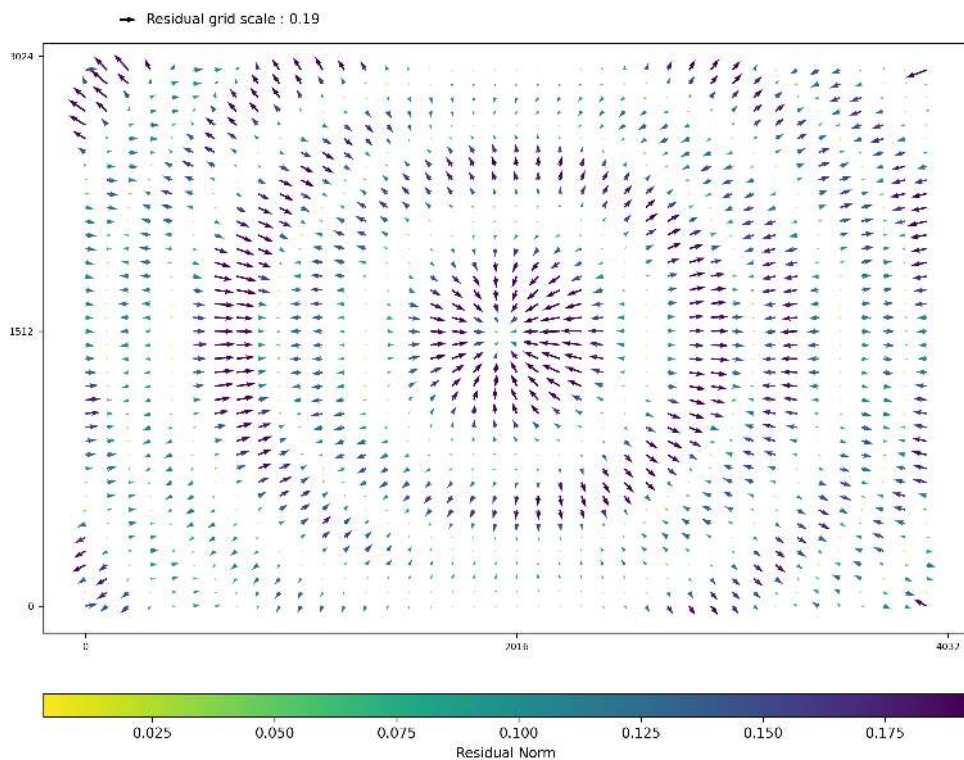


Length	2	3	4	5	6	7	8	9	10
Count	127103	56333	32971	21741	14897	10704	8739	6680	5472

Camera Models Details

v2 dji m4t 4032 3024 brown 0.6666

	k1	k2	k3	p1	p2	focal	aspect_ratio	cx	cy
Initial	0.0000	0.0000	0.0000	0.0000	0.0000	0.6667	1.0000	0.0000	0.0000
Optimized	0.0932	-0.1497	0.1026	0.0003	-0.0004	0.6973	1.0000	-0.0004	-0.0002



Photogrammetry Report

grimsel G6 ultra

Generated: 2026-06-01 19:27 UTC

Images: 214

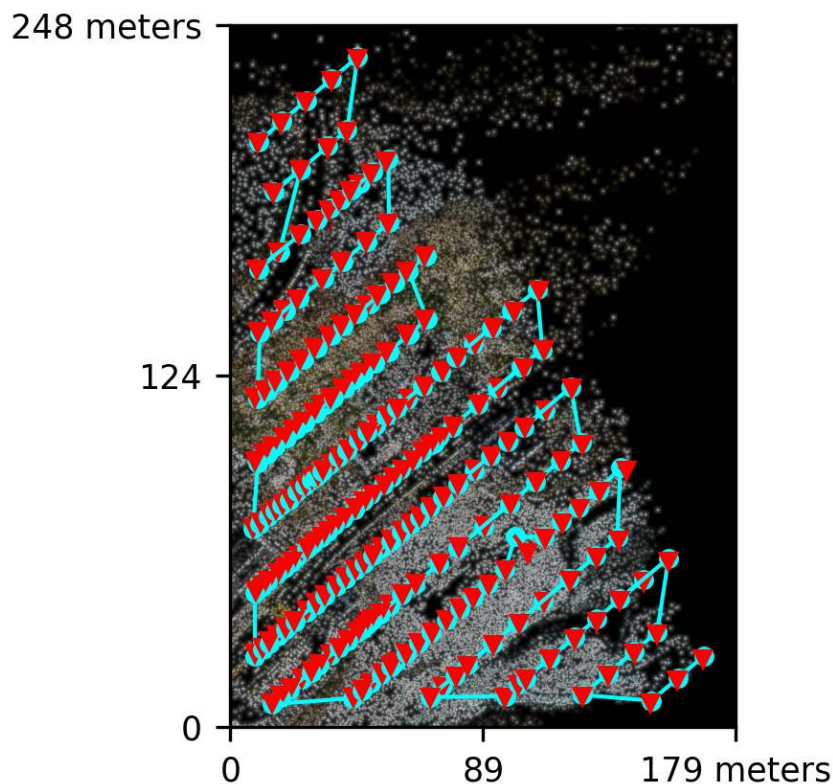
Processing: 2:36:02

Dataset Summary

Date	01/06/2026 at 16:58:25
Area Covered	0.036474 km ²
Processing Time	2.0h:19.0m:57.0s
Capture Start	31/05/2026 at 10:55:43
Capture End	31/05/2026 at 11:07:36

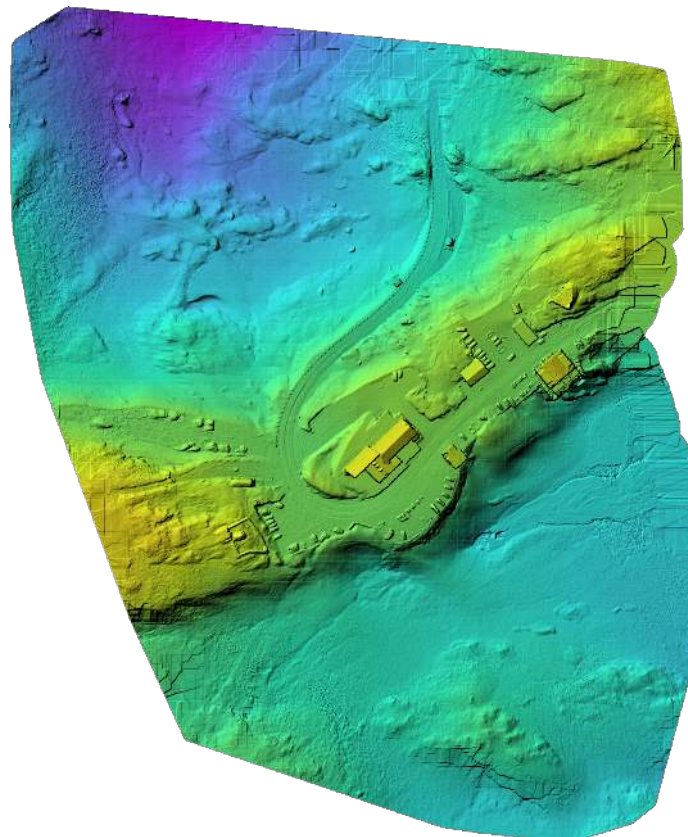
Processing Summary

Reconstructed Images	214 over 214 shots (100.0%)
Reconstructed Points (Sparse)	368751 over 375959 points (98.1%)
Reconstructed Points (Dense)	121,673,282 points
Average Ground Sampling Distance (GSD)	2.8 cm
Detected Features	16,000 features
Reconstructed Features	10,464 features
Geographic Reference	GPS
GPS errors	1.25 meters



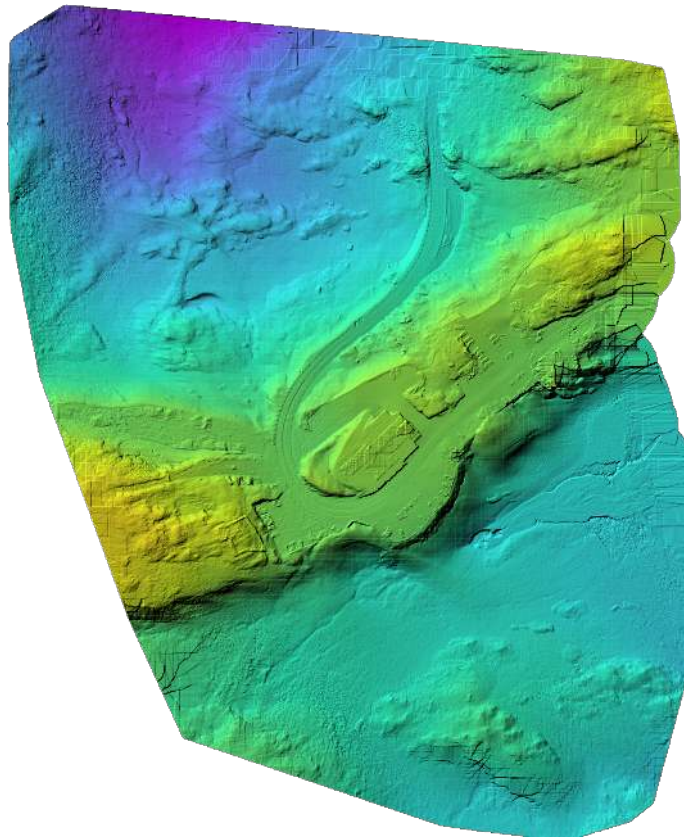


Orthophoto



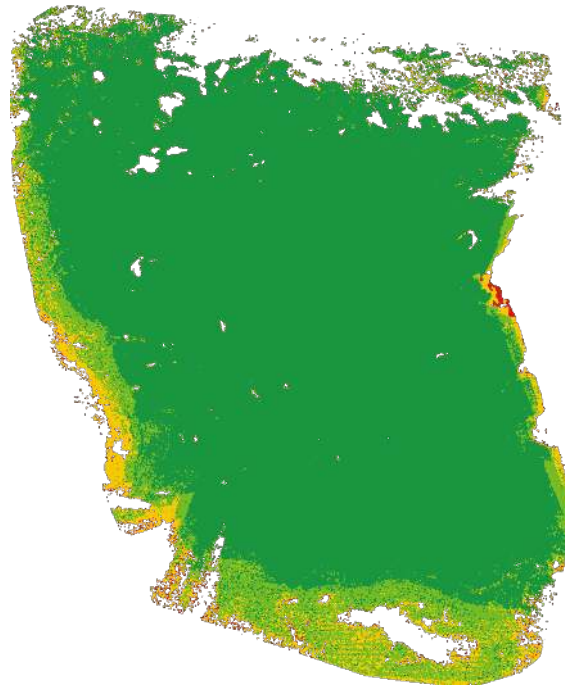
Digital Surface Model





Digital Terrain Model



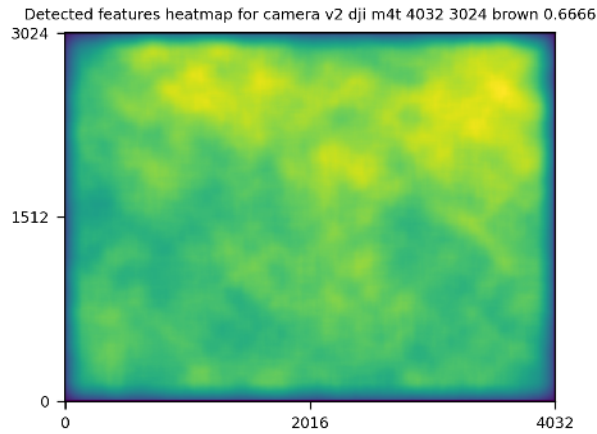


GPS/GCP/3D Errors Details

GPS	Mean	Standard Deviation	RMS Error
X Error (meters)	0.006	0.606	0.606
Y Error (meters)	0.002	0.541	0.541
Z Error (meters)	0.008	1.255	1.255
Total			1.245

3D	Mean	Standard Deviation	RMS Error
X Error (meters)	0.121	0.212	0.244
Y Error (meters)	0.178	0.289	0.339
Z Error (meters)	0.203	0.386	0.437
Total			0.332

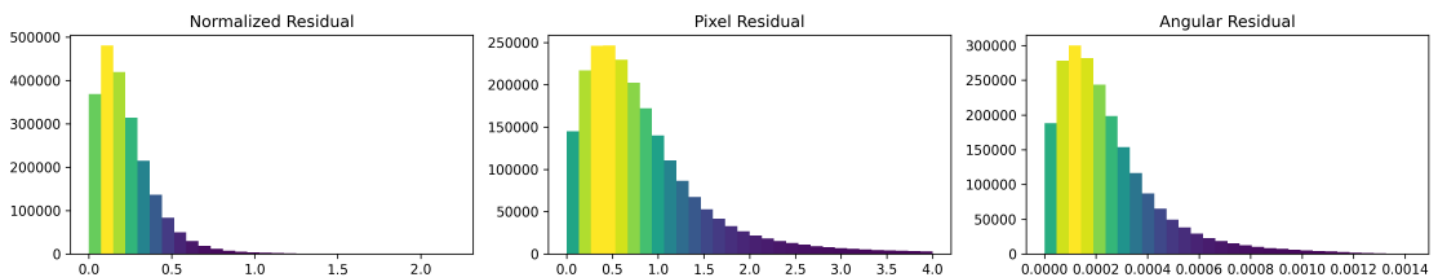
	Absolute	Relative
Horizontal Accuracy CE90 (meters)	0.991	0.553
Vertical Accuracy LE90 (meters)	1.962	0.417

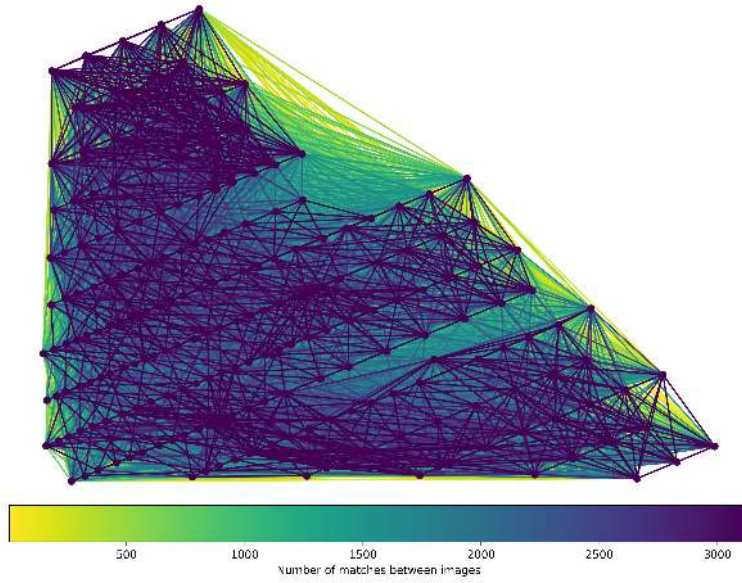


	Min.	Max.	Mean	Median
Detected	16000	16000	16000	16000
Reconstructed	2877	12595	10369	10464

Reconstruction Details

Average Reprojection Error (normalized / pixels / angular)	0.22 / 0.82 / 0.00024
Average Track Length	6.02 images
Average Track Length (> 2)	8.69 images





Length	2	3	4	5	6	7	8	9	10
Count	147141	64679	36655	22812	16048	12239	9520	7687	6033

Camera Models Details

v2 dji m4t 4032 3024 brown 0.6666

	k1	k2	k3	p1	p2	focal	aspect_ratio	cx	cy
Initial	0.0000	0.0000	0.0000	0.0000	0.0000	0.6667	1.0000	0.0000	0.0000
Optimized	0.0948	-0.1507	0.1020	0.0003	-0.0003	0.6970	1.0000	0.0000	-0.0002

